

Datasheet for ABIN1537860
anti-CNDP1 antibody (AA 142-170)[Go to Product page](#)

1 Image

Overview

Quantity:	400 µL
Target:	CNDP1
Binding Specificity:	AA 142-170
Reactivity:	Human
Host:	Rabbit
Clonality:	Polyclonal
Conjugate:	This CNDP1 antibody is un-conjugated
Application:	Western Blotting (WB)

Product Details

Immunogen:	This CNDP1 antibody is generated from rabbits immunized with a KLH conjugated synthetic peptide between 142-170 amino acids from the Central region of human CNDP1.
Clone:	RB37545
Isotype:	Ig Fraction
Predicted Reactivity:	M, Rat
Purification:	This antibody is purified through a protein A column, followed by peptide affinity purification.

Target Details

Target:	CNDP1
Alternative Name:	CNDP1 (CNDP1 Products)

Target Details

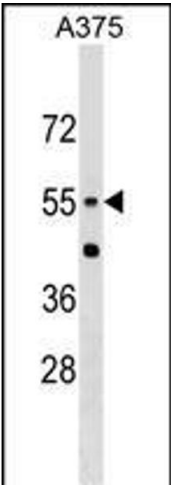
Background:	This gene encodes a member of the M20 metalloprotease family. The encoded protein is specifically expressed in the brain, is a homodimeric dipeptidase which was identified as human carnosinase. This gene contains trinucleotide (CTG) repeat length polymorphism in the coding region.
Molecular Weight:	56706
Gene ID:	84735
NCBI Accession:	NP_116038
UniProt:	Q96KN2

Application Details

Application Notes:	WB: 1:1000
Restrictions:	For Research Use only

Handling

Format:	Liquid
Buffer:	Purified polyclonal antibody supplied in PBS with 0.09 % (W/V) sodium azide.
Preservative:	Sodium azide
Precaution of Use:	This product contains Sodium azide: a POISONOUS AND HAZARDOUS SUBSTANCE which should be handled by trained staff only.
Storage:	4 °C, -20 °C
Storage Comment:	CNDP1 Antibody (Center) can be refrigerated at 2-8 °C for up to 6 months. For long term storage, keep at -20 °C.
Expiry Date:	6 months



Western Blotting

Image 1. CNDP1 Antibody (Center) (ABIN1537860 and ABIN2849250) western blot analysis in cell line lysates (35 µg/lane). This demonstrates the CNDP1 antibody detected the CNDP1 protein (arrow).