



Datasheet for ABIN1537869  
**anti-ATAD3C antibody (AA 146-172)**



[Go to Product page](#)

1 Image

Overview

Quantity:	400 µL
Target:	ATAD3C
Binding Specificity:	AA 146-172
Reactivity:	Human
Host:	Rabbit
Clonality:	Polyclonal
Conjugate:	This ATAD3C antibody is un-conjugated
Application:	Western Blotting (WB)

Product Details

Immunogen:	This ATAD3C antibody is generated from rabbits immunized with a KLH conjugated synthetic peptide between 146-172 amino acids from the Central region of human ATAD3C.
Clone:	RB38694
Isotype:	Ig Fraction
Purification:	This antibody is purified through a protein A column, followed by peptide affinity purification.

Target Details

Target:	ATAD3C
Alternative Name:	ATAD3C ( <a href="#">ATAD3C Products</a> )
Background:	The function of this protein remains unknown.

## Target Details

Molecular Weight:	46380
Gene ID:	219293
NCBI Accession:	<a href="#">NP_001034300</a>
UniProt:	<a href="#">Q5T2N8</a>

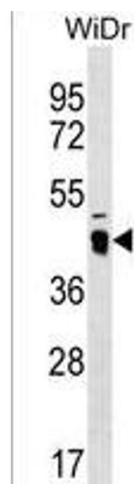
## Application Details

Application Notes:	WB: 1:1000
Restrictions:	For Research Use only

## Handling

Format:	Liquid
Buffer:	Purified polyclonal antibody supplied in PBS with 0.09 % (W/V) sodium azide.
Preservative:	Sodium azide
Precaution of Use:	This product contains Sodium azide: a POISONOUS AND HAZARDOUS SUBSTANCE which should be handled by trained staff only.
Storage:	4 °C,-20 °C
Storage Comment:	ATAD3C Antibody (Center) can be refrigerated at 2-8 °C for up to 6 months. For long term storage, keep at -20 °C.
Expiry Date:	6 months

## Images



### Western Blotting

**Image 1.** ATAD3C Antibody (Center) (ABIN1537869 and ABIN2850335) western blot analysis in WiDr cell line lysates (35 µg/lane). This demonstrates the ATAD3C antibody detected the ATAD3C protein (arrow).