

Datasheet for ABIN1537877
anti-PLEKHA1 antibody (AA 149-178)[Go to Product page](#)

1 Image

Overview

Quantity:	400 µL
Target:	PLEKHA1
Binding Specificity:	AA 149-178
Reactivity:	Human
Host:	Rabbit
Clonality:	Polyclonal
Conjugate:	This PLEKHA1 antibody is un-conjugated
Application:	Western Blotting (WB)

Product Details

Immunogen:	This PLEKHA1 antibody is generated from rabbits immunized with a KLH conjugated synthetic peptide between 149-178 amino acids from the Central region of human PLEKHA1.
Clone:	RB36577
Isotype:	Ig Fraction
Purification:	This antibody is purified through a protein A column, followed by peptide affinity purification.

Target Details

Target:	PLEKHA1
Alternative Name:	PLEKHA1 (PLEKHA1 Products)
Background:	This gene encodes a pleckstrin homology domain-containing adapter protein. The encoded

Target Details

protein is localized to the plasma membrane where it specifically binds phosphatidylinositol 3,4-bisphosphate. This protein may be involved in the formation of signaling complexes in the plasma membrane. Polymorphisms in this gene are associated with age-related macular degeneration. Alternate splicing results in multiple transcript variants. A pseudogene of this gene is found on chromosome 5.

Molecular Weight: 45553

Gene ID: 59338

NCBI Accession: [NP_001001974](#), [NP_001182537](#), [NP_067635](#)

UniProt: [Q9HB21](#)

Pathways: [Platelet-derived growth Factor Receptor Signaling](#)

Application Details

Application Notes: WB: 1:1000

Restrictions: For Research Use only

Handling

Format: Liquid

Buffer: Purified polyclonal antibody supplied in PBS with 0.09 % (W/V) sodium azide.

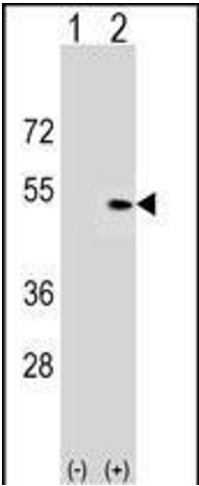
Preservative: Sodium azide

Precaution of Use: This product contains Sodium azide: a POISONOUS AND HAZARDOUS SUBSTANCE which should be handled by trained staff only.

Storage: 4 °C, -20 °C

Storage Comment: PLEKHA1 Antibody (Center) can be refrigerated at 2-8 °C for up to 6 months. For long term storage, keep at -20 °C.

Expiry Date: 6 months



Western Blotting

Image 1. Western blot analysis of PLEKHA1 (arrow) using rabbit polyclonal PLEKHA1 Antibody (Center) (ABIN1537877 and ABIN2849727). 293 cell lysates (2 μ g/lane) either nontransfected (Lane 1) or transiently transfected (Lane 2) with the PLEKHA1 gene.