

Datasheet for ABIN1537878
anti-TGIF2LX antibody (AA 149-175)[Go to Product page](#)

1 Image

Overview

Quantity:	400 µL
Target:	TGIF2LX
Binding Specificity:	AA 149-175
Reactivity:	Human
Host:	Rabbit
Clonality:	Polyclonal
Conjugate:	This TGIF2LX antibody is un-conjugated
Application:	Western Blotting (WB)

Product Details

Immunogen:	This TGIF2LX antibody is generated from rabbits immunized with a KLH conjugated synthetic peptide between 149-175 amino acids from the Central region of human TGIF2LX.
Clone:	RB38027
Isotype:	Ig Fraction
Purification:	This antibody is purified through a protein A column, followed by peptide affinity purification.

Target Details

Target:	TGIF2LX
Alternative Name:	TGIF2LX (TGIF2LX Products)
Background:	This gene encodes a member of the TALE/TGIF homeobox family of transcription factors.

Target Details

Testis-specific expression suggests that this gene may play a role in spermatogenesis. A homolog of this gene lies within the male specific region of chromosome Y, in a block of sequence that is thought to be the result of a large X-to-Y transposition.

Molecular Weight: 26675

Gene ID: 90316

NCBI Accession: [NP_620410](#)

UniProt: [Q8IUE1](#)

Application Details

Application Notes: WB: 1:1000

Restrictions: For Research Use only

Handling

Format: Liquid

Buffer: Purified polyclonal antibody supplied in PBS with 0.09 % (W/V) sodium azide.

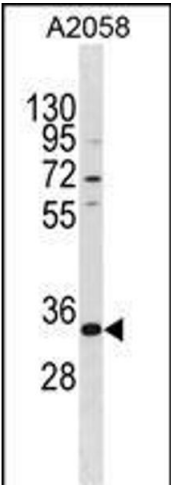
Preservative: Sodium azide

Precaution of Use: This product contains Sodium azide: a POISONOUS AND HAZARDOUS SUBSTANCE which should be handled by trained staff only.

Storage: 4 °C, -20 °C

Storage Comment: TGIF2LX Antibody (Center) can be refrigerated at 2-8 °C for up to 6 months. For long term storage, keep at -20 °C.

Expiry Date: 6 months



Western Blotting

Image 1. TGIF2LX Antibody (Center) (ABIN1537878 and ABIN2849969) western blot analysis in cell line lysates (35 µg/lane). This demonstrates the TGIF2LX antibody detected the TGIF2LX protein (arrow).