



[Go to Product page](#)

Datasheet for ABIN1537879  
**anti-ARL10 antibody (AA 150-176)**

1 Image

Overview

Quantity:	400 µL
Target:	ARL10
Binding Specificity:	AA 150-176
Reactivity:	Human
Host:	Rabbit
Clonality:	Polyclonal
Conjugate:	This ARL10 antibody is un-conjugated
Application:	Western Blotting (WB)

Product Details

Immunogen:	This ARL10 antibody is generated from rabbits immunized with a KLH conjugated synthetic peptide between 150-176 amino acids from the Central region of human ARL10.
Clone:	RB37820
Isotype:	Ig Fraction
Purification:	This antibody is purified through a protein A column, followed by peptide affinity purification.

Target Details

Target:	ARL10
Alternative Name:	ARL10 ( <a href="#">ARL10 Products</a> )
Background:	ARL10 belongs to the small GTPase superfamily, Arf family. GTPases (singular GTPase) are a

## Target Details

---

large family of hydrolase enzymes that can bind and hydrolyze GTP. The GTP binding and hydrolysis takes place in the highly conserved G domain common to all GTPases.

Molecular Weight: 27459

Gene ID: 285598

NCBI Accession: [NP\\_775935](#)

UniProt: [Q8N8L6](#)

## Application Details

---

Application Notes: WB: 1:1000

Restrictions: For Research Use only

## Handling

---

Format: Liquid

Buffer: Purified polyclonal antibody supplied in PBS with 0.09 % (W/V) sodium azide.

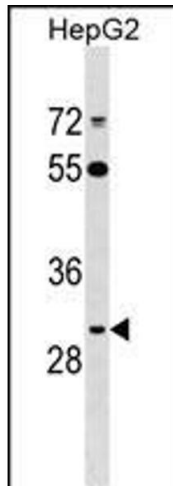
Preservative: Sodium azide

Precaution of Use: This product contains Sodium azide: a POISONOUS AND HAZARDOUS SUBSTANCE which should be handled by trained staff only.

Storage: 4 °C, -20 °C

Storage Comment: ARL10 Antibody (Center) can be refrigerated at 2-8 °C for up to 6 months. For long term storage, keep at -20 °C.

Expiry Date: 6 months



### Western Blotting

**Image 1.** ARL10 Antibody (Center) (ABIN1537879 and ABIN2848994) western blot analysis in HepG2 cell line lysates (35 µg/lane). This demonstrates the ARL10 antibody detected the ARL10 protein (arrow).