

Datasheet for ABIN1537880
anti-Kcng2 antibody (AA 149-177)[Go to Product page](#)

1 Image

Overview

Quantity:	400 µL
Target:	Kcng2
Binding Specificity:	AA 149-177
Reactivity:	Human
Host:	Rabbit
Clonality:	Polyclonal
Conjugate:	This Kcng2 antibody is un-conjugated
Application:	Western Blotting (WB)

Product Details

Immunogen:	This KCNG2 antibody is generated from rabbits immunized with a KLH conjugated synthetic peptide between 149-177 amino acids from the Central region of human KCNG2.
Clone:	RB39218
Isotype:	Ig Fraction
Purification:	This antibody is purified through a protein A column, followed by peptide affinity purification.

Target Details

Target:	Kcng2
Alternative Name:	KCNG2 (Kcng2 Products)
Background:	Voltage-gated potassium (Kv) channels represent the most complex class of voltage-gated ion

Target Details

channels from both functional and structural standpoints. Their diverse functions include regulating neurotransmitter release, heart rate, insulin secretion, neuronal excitability, epithelial electrolyte transport, smooth muscle contraction, and cell volume. This gene encodes a member of the potassium channel, voltage-gated, subfamily G. This member is a gamma subunit of the voltage-gated potassium channel. The delayed-rectifier type channels containing this subunit may contribute to cardiac action potential repolarization. [provided by RefSeq].

Molecular Weight: 51240

Gene ID: 26251

NCBI Accession: [NP_036415](#)

UniProt: [Q9UJ96](#)

Application Details

Application Notes: WB: 1:1000

Restrictions: For Research Use only

Handling

Format: Liquid

Buffer: Purified polyclonal antibody supplied in PBS with 0.09 % (W/V) sodium azide.

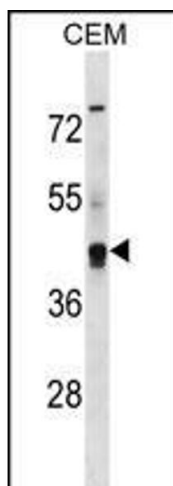
Preservative: Sodium azide

Precaution of Use: This product contains Sodium azide: a POISONOUS AND HAZARDOUS SUBSTANCE which should be handled by trained staff only.

Storage: 4 °C, -20 °C

Storage Comment: KCNG2 Antibody (Center) can be refrigerated at 2-8 °C for up to 6 months. For long term storage, keep at -20 °C.

Expiry Date: 6 months



Western Blotting

Image 1. KCNG2 Antibody (Center) (ABIN1537880 and ABIN2850369) western blot analysis in CEM cell line lysates (35 µg/lane). This demonstrates the KCNG2 antibody detected the KCNG2 protein (arrow).