

Datasheet for ABIN1537881
anti-NAT6 antibody (AA 150-179)[Go to Product page](#)

1 Image

Overview

Quantity:	400 µL
Target:	NAT6
Binding Specificity:	AA 150-179
Reactivity:	Human
Host:	Rabbit
Clonality:	Polyclonal
Conjugate:	This NAT6 antibody is un-conjugated
Application:	Western Blotting (WB)

Product Details

Immunogen:	This NAT6 antibody is generated from rabbits immunized with a KLH conjugated synthetic peptide between 150-179 amino acids from the Central region of human NAT6.
Clone:	RB39358
Isotype:	Ig Fraction
Purification:	This antibody is purified through a protein A column, followed by peptide affinity purification.

Target Details

Target:	NAT6
Alternative Name:	NAT6 (NAT6 Products)
Background:	NAT6 seems to be involved in N-acetylation. Acts on peptides with a N-terminal Met followed

Target Details

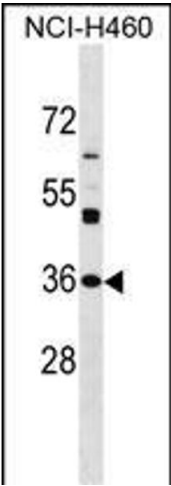
	by Asp/Glu/Asn. May act as a tumor suppressor.
Molecular Weight:	31445
Gene ID:	24142
NCBI Accession:	NP_001186945 , NP_001186947 , NP_036323
UniProt:	Q93015

Application Details

Application Notes:	WB: 1:1000
Restrictions:	For Research Use only

Handling

Format:	Liquid
Buffer:	Purified polyclonal antibody supplied in PBS with 0.09 % (W/V) sodium azide.
Preservative:	Sodium azide
Precaution of Use:	This product contains Sodium azide: a POISONOUS AND HAZARDOUS SUBSTANCE which should be handled by trained staff only.
Storage:	4 °C,-20 °C
Storage Comment:	NAT6 Antibody (Center) can be refrigerated at 2-8 °C for up to 6 months. For long term storage, keep at -20 °C.
Expiry Date:	6 months



Western Blotting

Image 1. NAT6 Antibody (Center) (ABIN1537881 and ABIN2850382) western blot analysis in NCI- cell line lysates (35 µg/lane). This demonstrates the NAT6 antibody detected the NAT6 protein (arrow).