

Datasheet for ABIN1537885
anti-ERAL1 antibody (AA 152-180)[Go to Product page](#)

1 Image

Overview

Quantity:	400 µL
Target:	ERAL1
Binding Specificity:	AA 152-180
Reactivity:	Human
Host:	Rabbit
Clonality:	Polyclonal
Conjugate:	This ERAL1 antibody is un-conjugated
Application:	Western Blotting (WB)

Product Details

Immunogen:	This ERAL1 antibody is generated from rabbits immunized with a KLH conjugated synthetic peptide between 152-180 amino acids from the Central region of human ERAL1.
Clone:	RB37682
Isotype:	Ig Fraction
Purification:	This antibody is purified through a protein A column, followed by peptide affinity purification.

Target Details

Target:	ERAL1
Alternative Name:	ERAL1 (ERAL1 Products)
Background:	Era is an essential GTPase that is required for proper cell cycle progression and cell division in

Target Details

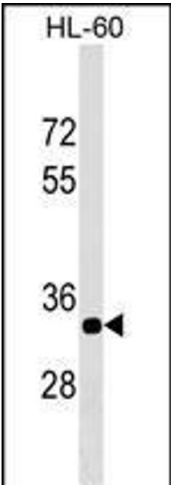
	E. coli. Human homologues have been isolated which have been designated ERAL1A and ERAL1B.
Molecular Weight:	48350
Gene ID:	26284
NCBI Accession:	NP_005693
UniProt:	O75616
Pathways:	Ribonucleoprotein Complex Subunit Organization , Ribosome Assembly

Application Details

Application Notes:	WB: 1:1000
Restrictions:	For Research Use only

Handling

Format:	Liquid
Buffer:	Purified polyclonal antibody supplied in PBS with 0.09 % (W/V) sodium azide.
Preservative:	Sodium azide
Precaution of Use:	This product contains Sodium azide: a POISONOUS AND HAZARDOUS SUBSTANCE which should be handled by trained staff only.
Storage:	4 °C, -20 °C
Storage Comment:	ERAL1 Antibody (Center) can be refrigerated at 2-8 °C for up to 6 months. For long term storage, keep at -20 °C.
Expiry Date:	6 months



Western Blotting

Image 1. ERAL1 Antibody (Center) (ABIN1537885 and ABIN2849208) western blot analysis in HL-60 cell line lysates (35 µg/lane). This demonstrates the ERAL1 antibody detected the ERAL1 protein (arrow).