

Datasheet for ABIN1537901

anti-Spermidine Synthase antibody (AA 158-187)[Go to Product page](#)**1** Image

Overview

Quantity:	400 µL
Target:	Spermidine Synthase (SRM)
Binding Specificity:	AA 158-187
Reactivity:	Human
Host:	Rabbit
Clonality:	Polyclonal
Conjugate:	This Spermidine Synthase antibody is un-conjugated
Application:	Western Blotting (WB)

Product Details

Immunogen:	This SRM antibody is generated from rabbits immunized with a KLH conjugated synthetic peptide between 158-187 amino acids from the Central region of human SRM.
Clone:	RB36584
Isotype:	Ig Fraction
Predicted Reactivity:	M
Purification:	This antibody is purified through a protein A column, followed by peptide affinity purification.

Target Details

Target:	Spermidine Synthase (SRM)
Alternative Name:	SRM (SRM Products)

Target Details

Background: The polyamines putrescine, spermine, and spermidine are ubiquitous polycationic mediators of cell growth and differentiation. Spermidine synthase is one of four enzymes in the polyamine-biosynthetic pathway and carries out the final step of spermidine biosynthesis. This enzyme catalyzes the conversion of putrescine to spermidine using decarboxylated S-adenosylmethionine as the cofactor.

Molecular Weight: 33825

Gene ID: 6723

NCBI Accession: [NP_003123](#)

UniProt: [P19623](#)

Application Details

Application Notes: WB: 1:1000

Restrictions: For Research Use only

Handling

Format: Liquid

Buffer: Purified polyclonal antibody supplied in PBS with 0.09 % (W/V) sodium azide.

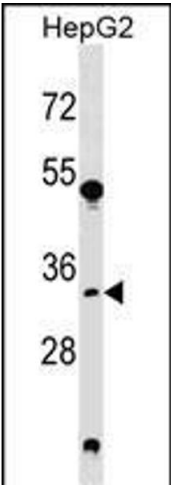
Preservative: Sodium azide

Precaution of Use: This product contains Sodium azide: a POISONOUS AND HAZARDOUS SUBSTANCE which should be handled by trained staff only.

Storage: 4 °C,-20 °C

Storage Comment: SRM Antibody (Center) can be refrigerated at 2-8 °C for up to 6 months. For long term storage, keep at -20 °C.

Expiry Date: 6 months



Western Blotting

Image 1. SRM Antibody (Center) (ABIN1537901 and ABIN2848613) western blot analysis in HepG2 cell line lysates (35 µg/lane). This demonstrates the SRM antibody detected the SRM protein (arrow).