



Datasheet for ABIN1537904
anti-SUOX antibody (AA 160-187)



[Go to Product page](#)

1 Image

Overview

Quantity:	400 µL
Target:	SUOX
Binding Specificity:	AA 160-187
Reactivity:	Human
Host:	Rabbit
Clonality:	Polyclonal
Conjugate:	This SUOX antibody is un-conjugated
Application:	Western Blotting (WB)

Product Details

Immunogen:	This SUOX antibody is generated from rabbits immunized with a KLH conjugated synthetic peptide between 160-187 amino acids from the Central region of human SUOX.
Clone:	RB36902
Isotype:	Ig Fraction
Predicted Reactivity:	Pr
Purification:	This antibody is purified through a protein A column, followed by peptide affinity purification.

Target Details

Target:	SUOX
Alternative Name:	SUOX (SUOX Products)

Target Details

Background: Sulfite oxidase is a homodimeric protein localized to the intermembrane space of mitochondria. Each subunit contains a heme domain and a molybdopterin-binding domain. The enzyme catalyzes the oxidation of sulfite to sulfate, the final reaction in the oxidative degradation of the sulfur amino acids cysteine and methionine. Sulfite oxidase deficiency results in neurological abnormalities which are often fatal at an early age. Alternative splicing results in multiple transcript variants encoding identical proteins.

Molecular Weight: 60283

Gene ID: 6821

NCBI Accession: [NP_000447](#), [NP_001027558](#), [NP_001027559](#)

UniProt: [P51687](#)

Application Details

Application Notes: WB: 1:1000

Restrictions: For Research Use only

Handling

Format: Liquid

Buffer: Purified polyclonal antibody supplied in PBS with 0.09 % (W/V) sodium azide.

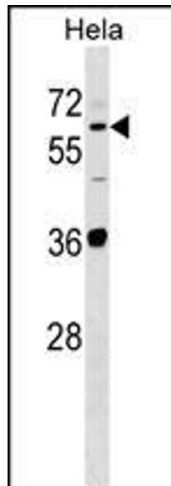
Preservative: Sodium azide

Precaution of Use: This product contains Sodium azide: a POISONOUS AND HAZARDOUS SUBSTANCE which should be handled by trained staff only.

Storage: 4 °C, -20 °C

Storage Comment: SUOX Antibody (Center) can be refrigerated at 2-8 °C for up to 6 months. For long term storage, keep at -20 °C.

Expiry Date: 6 months



Western Blotting

Image 1. SUOX Antibody (Center) (ABIN1537904 and ABIN2848703) western blot analysis in HeLa cell line lysates (35 µg/lane). This demonstrates the SUOX antibody detected the SUOX protein (arrow).