



[Go to Product page](#)

Datasheet for ABIN1537911

anti-GPR172B antibody (AA 162-190)

1 Image

Overview

Quantity:	400 µL
Target:	GPR172B
Binding Specificity:	AA 162-190
Reactivity:	Human
Host:	Rabbit
Clonality:	Polyclonal
Conjugate:	This GPR172B antibody is un-conjugated
Application:	Western Blotting (WB)

Product Details

Immunogen:	This GPR172B antibody is generated from rabbits immunized with a KLH conjugated synthetic peptide between 162-190 amino acids from the Central region of human GPR172B.
Clone:	RB38482
Isotype:	Ig Fraction
Purification:	This antibody is purified through a protein A column, followed by peptide affinity purification.

Target Details

Target:	GPR172B
Alternative Name:	GPR172B (GPR172B Products)
Background:	GPCR41 (MIM 607882) and GPCR42 act as receptors for porcine endogenous retrovirus

Target Details

subgroup A (PERV-A).[supplied by OMIM].

Molecular Weight: 46317

Gene ID: 55065

NCBI Accession: [NP_001098047](#), [NP_060456](#)

UniProt: [Q9NWF4](#)

Application Details

Application Notes: WB: 1:1000

Restrictions: For Research Use only

Handling

Format: Liquid

Buffer: Purified polyclonal antibody supplied in PBS with 0.09 % (W/V) sodium azide.

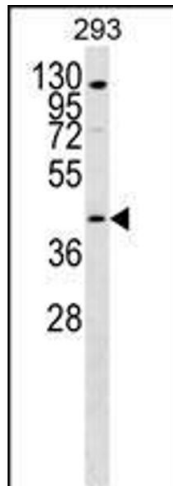
Preservative: Sodium azide

Precaution of Use: This product contains Sodium azide: a POISONOUS AND HAZARDOUS SUBSTANCE which should be handled by trained staff only.

Storage: 4 °C,-20 °C

Storage Comment: GPR172B Antibody (Center) can be refrigerated at 2-8 °C for up to 6 months. For long term storage, keep at -20 °C.

Expiry Date: 6 months



Western Blotting

Image 1. GPR172B Antibody (Center) (ABIN1537911 and ABIN2849900) western blot analysis in 293 cell line lysates (35 µg/lane). This demonstrates the GPR172B Antibody detected the GPR172B protein (arrow).