

Datasheet for ABIN1537916  
**anti-CCBE1 antibody (AA 163-191)**[Go to Product page](#)

## 1 Image

## Overview

Quantity:	400 µL
Target:	CCBE1
Binding Specificity:	AA 163-191
Reactivity:	Human
Host:	Rabbit
Clonality:	Polyclonal
Conjugate:	This CCBE1 antibody is un-conjugated
Application:	Western Blotting (WB)

## Product Details

Immunogen:	This CCBE1 antibody is generated from rabbits immunized with a KLH conjugated synthetic peptide between 163-191 amino acids from the Central region of human CCBE1.
Clone:	RB37238
Isotype:	Ig Fraction
Purification:	This antibody is purified through a protein A column, followed by peptide affinity purification.

## Target Details

Target:	CCBE1
Alternative Name:	CCBE1 ( <a href="#">CCBE1 Products</a> )
Background:	This gene is thought to function in extracellular matrix remodeling and migration. It is

## Target Details

predominantly expressed in the ovary, but down regulated in ovarian cancer cell lines and primary carcinomas, suggesting its role as a tumour suppressor. Mutations in this gene have been associated with Hennekam lymphangiectasia-lymphedema syndrome, a generalized lymphatic dysplasia in humans.

Molecular Weight: 44103

Gene ID: 147372

NCBI Accession: [NP\\_597716](#)

UniProt: [Q6UXH8](#)

## Application Details

Application Notes: WB: 1:1000

Restrictions: For Research Use only

## Handling

Format: Liquid

Buffer: Purified polyclonal antibody supplied in PBS with 0.09 % (W/V) sodium azide.

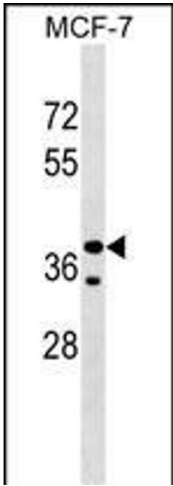
Preservative: Sodium azide

Precaution of Use: This product contains Sodium azide: a POISONOUS AND HAZARDOUS SUBSTANCE which should be handled by trained staff only.

Storage: 4 °C, -20 °C

Storage Comment: CCBE1 Antibody (Center) can be refrigerated at 2-8 °C for up to 6 months. For long term storage, keep at -20 °C.

Expiry Date: 6 months



Western Blotting

**Image 1.** CCBE1 Antibody (Center) (ABIN1537916 and ABIN2848896) western blot analysis in MCF-7 cell line lysates (35 µg/lane). This demonstrates the CCBE1 antibody detected the CCBE1 protein (arrow).