

Datasheet for ABIN1537923  
**anti-DCPS antibody (AA 165-193)**[Go to Product page](#)

## 1 Image

## Overview

Quantity:	400 µL
Target:	DCPS
Binding Specificity:	AA 165-193
Reactivity:	Human
Host:	Rabbit
Clonality:	Polyclonal
Conjugate:	This DCPS antibody is un-conjugated
Application:	Western Blotting (WB)

## Product Details

Immunogen:	This DCPS antibody is generated from rabbits immunized with a KLH conjugated synthetic peptide between 165-193 amino acids from the Central region of human DCPS.
Clone:	RB37049
Isotype:	Ig Fraction
Predicted Reactivity:	B, M, Pig, Rat
Purification:	This antibody is purified through a protein A column, followed by peptide affinity purification.

## Target Details

Target:	DCPS
Alternative Name:	DCPS ( <a href="#">DCPS Products</a> )

## Target Details

**Background:** Necessary for the complete degradation of mRNAs, both in normal mRNA turnover and in nonsense-mediated mRNA decay. Removes the 7-methyl guanine cap structure from mRNA fragments shorter than 10 nucleotides that are produced by 3'->5' exonuclease-mediated mRNA decay. Releases m7GMP. Can also degrade m7GDP to m7GMP. Has no activity towards mRNA molecules longer than 25 nucleotides.

**Molecular Weight:** 38609

**Gene ID:** 28960

**NCBI Accession:** [NP\\_054745](#)

**UniProt:** [Q96C86](#)

## Application Details

**Application Notes:** WB: 1:1000

**Restrictions:** For Research Use only

## Handling

**Format:** Liquid

**Buffer:** Purified polyclonal antibody supplied in PBS with 0.09 % (W/V) sodium azide.

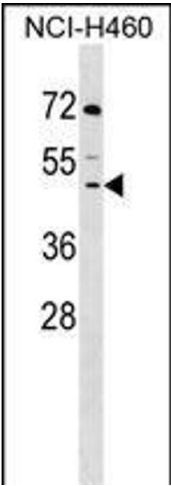
**Preservative:** Sodium azide

**Precaution of Use:** This product contains Sodium azide: a POISONOUS AND HAZARDOUS SUBSTANCE which should be handled by trained staff only.

**Storage:** 4 °C, -20 °C

**Storage Comment:** DCPS Antibody (Center) can be refrigerated at 2-8 °C for up to 6 months. For long term storage, keep at -20 °C.

**Expiry Date:** 6 months



Western Blotting

**Image 1.** DCPS Antibody (Center) (ABIN1537923 and ABIN2848746) western blot analysis in NCI- cell line lysates (35 µg/lane). This demonstrates the DCPS antibody detected the DCPS protein (arrow).