

Datasheet for ABIN1537925
anti-Actin-Like 8 antibody (AA 166-192)[Go to Product page](#)

1 Image

Overview

Quantity:	400 µL
Target:	Actin-Like 8 (ACTL8)
Binding Specificity:	AA 166-192
Reactivity:	Human
Host:	Rabbit
Clonality:	Polyclonal
Conjugate:	This Actin-Like 8 antibody is un-conjugated
Application:	Western Blotting (WB)

Product Details

Immunogen:	This ACTL8 antibody is generated from rabbits immunized with a KLH conjugated synthetic peptide between 166-192 amino acids from the Central region of human ACTL8.
Clone:	RB38144
Isotype:	Ig Fraction
Purification:	This antibody is purified through a protein A column, followed by peptide affinity purification.

Target Details

Target:	Actin-Like 8 (ACTL8)
Alternative Name:	ACTL8 (ACTL8 Products)
Background:	Belongs to the actin family.

Target Details

Molecular Weight:	41360
Gene ID:	81569
NCBI Accession:	NP_110439
UniProt:	Q9H568

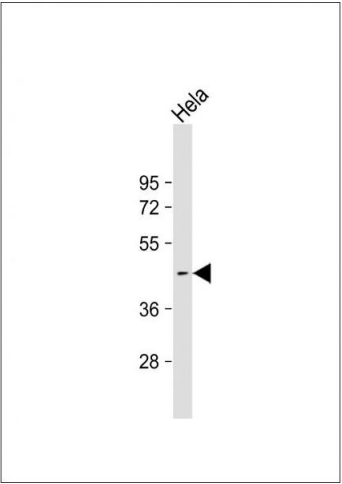
Application Details

Application Notes:	WB: 1:1000
Restrictions:	For Research Use only

Handling

Format:	Liquid
Buffer:	Purified polyclonal antibody supplied in PBS with 0.09 % (W/V) sodium azide.
Preservative:	Sodium azide
Precaution of Use:	This product contains Sodium azide: a POISONOUS AND HAZARDOUS SUBSTANCE which should be handled by trained staff only.
Storage:	4 °C, -20 °C
Storage Comment:	ACTL8 Antibody (Center) can be refrigerated at 2-8 °C for up to 6 months. For long term storage, keep at -20 °C.
Expiry Date:	6 months

Images



Western Blotting

Image 1. Anti-ACTL8 Antibody (Center) at 1:1000 dilution + HeLa whole cell lysate Lysates/proteins at 20 µg per lane. Secondary Goat Anti-Rabbit IgG, (H+L), Peroxidase conjugated at 1/10000 dilution. Predicted band size : 41 kDa
Blocking/Dilution buffer: 5 % NFDm/TBST.