



Datasheet for ABIN1537927
anti-ASPHD2 antibody (AA 165-194)



[Go to Product page](#)

1 Image

Overview

| | |
|----------------------|---------------------------------------|
| Quantity: | 400 µL |
| Target: | ASPHD2 |
| Binding Specificity: | AA 165-194 |
| Reactivity: | Human |
| Host: | Rabbit |
| Clonality: | Polyclonal |
| Conjugate: | This ASPHD2 antibody is un-conjugated |
| Application: | Western Blotting (WB) |

Product Details

| | |
|---------------|---|
| Immunogen: | This ASPHD2 antibody is generated from rabbits immunized with a KLH conjugated synthetic peptide between 165-194 amino acids from the Central region of human ASPHD2. |
| Clone: | RB36643 |
| Isotype: | Ig Fraction |
| Purification: | This antibody is purified through a protein A column, followed by peptide affinity purification. |

Target Details

| | |
|-------------------|---|
| Target: | ASPHD2 |
| Alternative Name: | ASPHD2 (ASPHD2 Products) |
| Background: | ASPHD2 belongs to the aspartyl/asparaginyl beta-hydroxylase family. |

Target Details

| | |
|-------------------|---------------------------|
| Molecular Weight: | 41699 |
| Gene ID: | 57168 |
| NCBI Accession: | NP_065170 |
| UniProt: | Q6ICH7 |

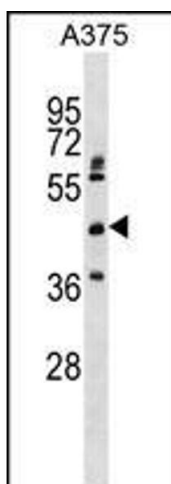
Application Details

| | |
|--------------------|-----------------------|
| Application Notes: | WB: 1:1000 |
| Restrictions: | For Research Use only |

Handling

| | |
|--------------------|--|
| Format: | Liquid |
| Buffer: | Purified polyclonal antibody supplied in PBS with 0.09 % (W/V) sodium azide. |
| Preservative: | Sodium azide |
| Precaution of Use: | This product contains Sodium azide: a POISONOUS AND HAZARDOUS SUBSTANCE which should be handled by trained staff only. |
| Storage: | 4 °C,-20 °C |
| Storage Comment: | ASPHD2 Antibody (Center) can be refrigerated at 2-8 °C for up to 6 months. For long term storage, keep at -20 °C. |
| Expiry Date: | 6 months |

Images



Western Blotting

Image 1. ASPHD2 Antibody (Center) (ABIN1537927 and ABIN2848817) western blot analysis in cell line lysates (35 μ g/lane). This demonstrates the ASPHD2 antibody detected the ASPHD2 protein (arrow).