

Datasheet for ABIN1537929
anti-ZFP36L2 antibody (AA 166-193)[Go to Product page](#)

2 Images

Overview

Quantity:	400 µL
Target:	ZFP36L2
Binding Specificity:	AA 166-193
Reactivity:	Human, Mouse
Host:	Rabbit
Clonality:	Polyclonal
Application:	Western Blotting (WB)

Product Details

Immunogen:	This ZFP36L2 antibody is generated from rabbits immunized with a KLH conjugated synthetic peptide between 166-193 amino acids from the Central region of human ZFP36L2.
Clone:	RB37481
Isotype:	Ig Fraction
Predicted Reactivity:	Rat, X
Purification:	This antibody is purified through a protein A column, followed by peptide affinity purification.

Target Details

Target:	ZFP36L2
Alternative Name:	ZFP36L2 (ZFP36L2 Products)
Background:	This gene is a member of the TIS11 family of early response genes. Family members are

Target Details

induced by various agonists such as the phorbol ester TPA and the polypeptide mitogen EGF. The encoded protein contains a distinguishing putative zinc finger domain with a repeating cysteine motif. This putative nuclear transcription factor most likely functions in regulating the response to growth factors.

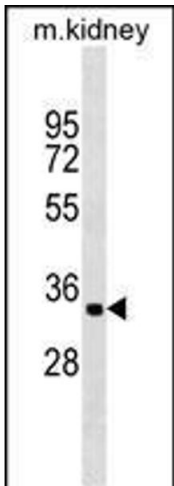
Molecular Weight:	51063
Gene ID:	678
NCBI Accession:	NP_008818
UniProt:	P47974
Pathways:	Stem Cell Maintenance

Application Details

Application Notes:	WB: 1:1000. WB: 1:1000
Restrictions:	For Research Use only

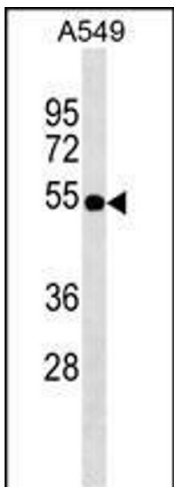
Handling

Format:	Liquid
Buffer:	Purified polyclonal antibody supplied in PBS with 0.09 % (W/V) sodium azide.
Preservative:	Sodium azide
Precaution of Use:	This product contains Sodium azide: a POISONOUS AND HAZARDOUS SUBSTANCE which should be handled by trained staff only.
Storage:	4 °C,-20 °C
Storage Comment:	ZFP36L2 Antibody (Center) can be refrigerated at 2-8 °C for up to 6 months. For long term storage, keep at -20 °C.
Expiry Date:	6 months



Western Blotting

Image 1. ZFP36L2 Antibody (Center) (ABIN1537929 and ABIN2849247) western blot analysis in mouse kidney tissue lysates (35 µg/lane). This demonstrates the ZFP36L2 antibody detected the ZFP36L2 protein (arrow).



Western Blotting

Image 2. ZFP36L2 Antibody (Center) (ABIN1537929 and ABIN2849247) western blot analysis in A549 cell line lysates (35 µg/lane). This demonstrates the ZFP36L2 antibody detected the ZFP36L2 protein (arrow).