

Datasheet for ABIN1537936
anti-METTL6 antibody (AA 168-195)



[Go to Product page](#)

1 Image

Overview

| | |
|----------------------|---------------------------------------|
| Quantity: | 400 µL |
| Target: | METTL6 |
| Binding Specificity: | AA 168-195 |
| Reactivity: | Human, Mouse |
| Host: | Rabbit |
| Clonality: | Polyclonal |
| Conjugate: | This METTL6 antibody is un-conjugated |
| Application: | Western Blotting (WB) |

Product Details

| | |
|---------------|---|
| Immunogen: | This METTL6 antibody is generated from rabbits immunized with a KLH conjugated synthetic peptide between 168-195 amino acids from the Central region of human METTL6. |
| Clone: | RB37940 |
| Isotype: | Ig Fraction |
| Purification: | This antibody is purified through a protein A column, followed by peptide affinity purification. |

Target Details

| | |
|-------------------|---|
| Target: | METTL6 |
| Alternative Name: | METTL6 (METTL6 Products) |
| Background: | Probable methyltransferase (By similarity). |

Target Details

| | |
|-------------------|---------------------------|
| Molecular Weight: | 33251 |
| Gene ID: | 131965 |
| NCBI Accession: | NP_689609 |
| UniProt: | Q8TCB7 |

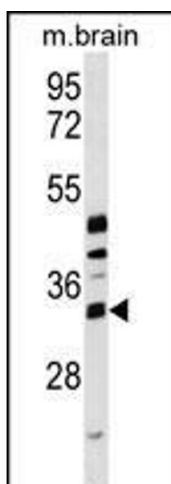
Application Details

| | |
|--------------------|-----------------------|
| Application Notes: | WB: 1:1000 |
| Restrictions: | For Research Use only |

Handling

| | |
|--------------------|--|
| Format: | Liquid |
| Buffer: | Purified polyclonal antibody supplied in PBS with 0.09 % (W/V) sodium azide. |
| Preservative: | Sodium azide |
| Precaution of Use: | This product contains Sodium azide: a POISONOUS AND HAZARDOUS SUBSTANCE which should be handled by trained staff only. |
| Storage: | 4 °C,-20 °C |
| Storage Comment: | METTL6 Antibody (Center) can be refrigerated at 2-8 °C for up to 6 months. For long term storage, keep at -20 °C. |
| Expiry Date: | 6 months |

Images



Western Blotting

Image 1. METTL6 Antibody (Center) (ABIN1537936 and ABIN2849857) western blot analysis in mouse brain tissue lysates (35 µg/lane). This demonstrates the METTL6 Antibody detected the METTL6 protein (arrow).