

Datasheet for ABIN1537940

anti-SERPINB11 antibody (AA 170-196)[Go to Product page](#)**1** Image

Overview

Quantity:	400 µL
Target:	SERPINB11
Binding Specificity:	AA 170-196
Reactivity:	Human
Host:	Rabbit
Clonality:	Polyclonal
Conjugate:	This SERPINB11 antibody is un-conjugated
Application:	Western Blotting (WB)

Product Details

Immunogen:	This SERPINB11 antibody is generated from rabbits immunized with a KLH conjugated synthetic peptide between 170-196 amino acids from the Central region of human SERPINB11.
Clone:	RB38395
Isotype:	Ig Fraction
Purification:	This antibody is purified through a protein A column, followed by peptide affinity purification.

Target Details

Target:	SERPINB11
Alternative Name:	SERPINB11 (SERPINB11 Products)
Background:	SerpinB11 is a serine proteinase inhibitor of the ovalbumin-like B clade of serpins. It was first

Target Details

discovered in human lung and prostate. Little is known about SerpinB11 tissue distribution and function. Splice variants of 305, 278 and 190 amino acids have been reported, with predicted masses of 33.97, 31.6 and 21.1 kDa respectively, and pIs of 8.11, 9.03 and 6.07 respectively. The 305 and 190 amino acid forms share the same aminotermminus as the 392 amino acid form. The 305 amino acid form has a deletion in residues 120-206, of the 392 amino acid form. The 190 amino acid form has a deletion in residues 57-259 relative to the long form. The 278 amino acid form starts at the third methionine, relative to the long form. All four forms contain the reactive center loop of the long form, but it is unknown if the shorter forms are active serpins. The predicted isoelectric points of SerpinB11 are significantly more basic than the other B clade serpins, and suggest a different localization or function for this serpin.

Molecular Weight:	44099
-------------------	-------

Gene ID:	89778
----------	-------

NCBI Accession:	NP_536723
-----------------	---------------------------

UniProt:	Q96P15
----------	------------------------

Application Details

Application Notes:	WB: 1:1000
--------------------	------------

Restrictions:	For Research Use only
---------------	-----------------------

Handling

Format:	Liquid
---------	--------

Buffer:	Purified polyclonal antibody supplied in PBS with 0.09 % (W/V) sodium azide.
---------	--

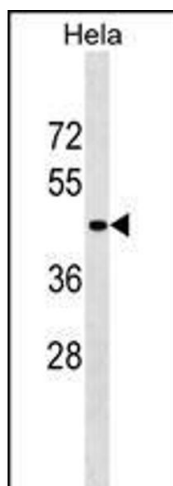
Preservative:	Sodium azide
---------------	--------------

Precaution of Use:	This product contains Sodium azide: a POISONOUS AND HAZARDOUS SUBSTANCE which should be handled by trained staff only.
--------------------	--

Storage:	4 °C, -20 °C
----------	--------------

Storage Comment:	SERPINB11 Antibody (Center) can be refrigerated at 2-8 °C for up to 6 months. For long term storage, keep at -20 °C.
------------------	--

Expiry Date:	6 months
--------------	----------



Western Blotting

Image 1. SERPINB11 Antibody (Center) (ABIN1537940 and ABIN2849802) western blot analysis in HeLa cell line lysates (35 µg/lane). This demonstrates the SERPINB11 antibody detected the SERPINB11 protein (arrow).