

Datasheet for ABIN1537944  
**anti-RCC2 antibody (AA 169-198)**[Go to Product page](#)

## 1 Image

## Overview

Quantity:	400 µL
Target:	RCC2
Binding Specificity:	AA 169-198
Reactivity:	Human
Host:	Rabbit
Clonality:	Polyclonal
Conjugate:	This RCC2 antibody is un-conjugated
Application:	Western Blotting (WB)

## Product Details

Immunogen:	This RCC2 antibody is generated from rabbits immunized with a KLH conjugated synthetic peptide between 169-198 amino acids from the Central region of human RCC2.
Clone:	RB40305
Isotype:	Ig Fraction
Purification:	This antibody is purified through a protein A column, followed by peptide affinity purification.

## Target Details

Target:	RCC2
Alternative Name:	RCC2 ( <a href="#">RCC2 Products</a> )
Background:	Required for completion of mitosis and cytokinesis. RCC2 may function as a guanine

## Target Details

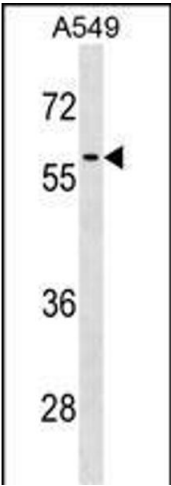
	nucleotide exchange factor for the small GTPase RAC1.
Molecular Weight:	56085
Gene ID:	55920
NCBI Accession:	<a href="#">NP_001129676</a> , <a href="#">NP_061185</a>
UniProt:	<a href="#">Q9P258</a>

## Application Details

Application Notes:	WB: 1:1000
Restrictions:	For Research Use only

## Handling

Format:	Liquid
Buffer:	Purified polyclonal antibody supplied in PBS with 0.09 % (W/V) sodium azide.
Preservative:	Sodium azide
Precaution of Use:	This product contains Sodium azide: a POISONOUS AND HAZARDOUS SUBSTANCE which should be handled by trained staff only.
Storage:	4 °C,-20 °C
Storage Comment:	RCC2 Antibody (Center) can be refrigerated at 2-8 °C for up to 6 months. For long term storage, keep at -20 °C.
Expiry Date:	6 months



Western Blotting

**Image 1.** RCC2 Antibody (Center) (ABIN1537944 and ABIN2838344) western blot analysis in A549 cell line lysates (35 µg/lane). This demonstrates the RCC2 antibody detected the RCC2 protein (arrow).