



[Go to Product page](#)

Datasheet for ABIN1537949  
**anti-QRFPR antibody (AA 172-198)**

1 Image

Overview

Quantity:	400 µL
Target:	QRFPR
Binding Specificity:	AA 172-198
Reactivity:	Human
Host:	Rabbit
Clonality:	Polyclonal
Conjugate:	This QRFPR antibody is un-conjugated
Application:	Western Blotting (WB)

Product Details

Immunogen:	This QRFPR antibody is generated from rabbits immunized with a KLH conjugated synthetic peptide between 172-198 amino acids from the Central region of human QRFPR.
Clone:	RB38341
Isotype:	Ig Fraction
Predicted Reactivity:	M, Rat
Purification:	This antibody is purified through a protein A column, followed by peptide affinity purification.

Target Details

Target:	QRFPR
Alternative Name:	QRFPR ( <a href="#">QRFPR Products</a> )

## Target Details

---

Background:	G protein-coupled receptors (GPCRs, or GPRs) contain 7 transmembrane domains and transduce extracellular signals through heterotrimeric G proteins.
Molecular Weight:	49488
Gene ID:	84109
NCBI Accession:	<a href="#">NP_937822</a>
UniProt:	<a href="#">Q96P65</a>

## Application Details

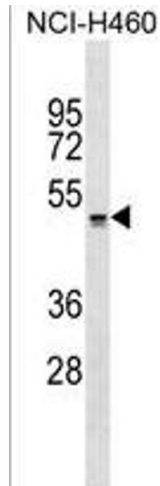
---

Application Notes:	WB: 1:1000
Restrictions:	For Research Use only

## Handling

---

Format:	Liquid
Buffer:	Purified polyclonal antibody supplied in PBS with 0.09 % (W/V) sodium azide.
Preservative:	Sodium azide
Precaution of Use:	This product contains Sodium azide: a POISONOUS AND HAZARDOUS SUBSTANCE which should be handled by trained staff only.
Storage:	4 °C,-20 °C
Storage Comment:	QRFPR Antibody (Center) can be refrigerated at 2-8 °C for up to 6 months. For long term storage, keep at -20 °C.
Expiry Date:	6 months



#### Western Blotting

**Image 1.** QRFPR Antibody (Center) (ABIN1537949 and ABIN2849608) western blot analysis in NCI- cell line lysates (35 µg/lane). This demonstrates the QRFPR antibody detected the QRFPR protein (arrow).