

Datasheet for ABIN1537953
anti-RHD antibody (AA 173-201)[Go to Product page](#)

1 Image

Overview

Quantity:	400 µL
Target:	RHD
Binding Specificity:	AA 173-201
Reactivity:	Human
Host:	Rabbit
Clonality:	Polyclonal
Conjugate:	This RHD antibody is un-conjugated
Application:	Western Blotting (WB)

Product Details

Immunogen:	This RHD antibody is generated from rabbits immunized with a KLH conjugated synthetic peptide between 173-201 amino acids from the Central region of human RHD.
Clone:	RB36830
Isotype:	Ig Fraction
Purification:	This antibody is purified through a protein A column, followed by peptide affinity purification.

Target Details

Target:	RHD
Alternative Name:	RHD (RHD Products)
Background:	The Rh blood group system is the second most clinically significant of the blood groups,

Target Details

second only to ABO. It is also the most polymorphic of the blood groups, with variations due to deletions, gene conversions, and missense mutations. The Rh blood group includes this gene, which encodes the RhD protein, and a second gene that encodes both the RhC and RhE antigens on a single polypeptide. The two genes, and a third unrelated gene, are found in a cluster on chromosome 1. The classification of Rh-positive and Rh-negative individuals is determined by the presence or absence of the highly immunogenic RhD protein on the surface of erythrocytes. Multiple transcript variants encoding different isoforms have been found for this gene.

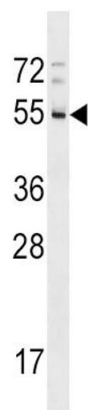
Molecular Weight:	45211
Gene ID:	6007
NCBI Accession:	NP_001121163 , NP_057208
UniProt:	Q02161

Application Details

Application Notes:	WB: 1:1000
Restrictions:	For Research Use only

Handling

Format:	Liquid
Buffer:	Purified polyclonal antibody supplied in PBS with 0.09 % (W/V) sodium azide.
Preservative:	Sodium azide
Precaution of Use:	This product contains Sodium azide: a POISONOUS AND HAZARDOUS SUBSTANCE which should be handled by trained staff only.
Storage:	4 °C,-20 °C
Storage Comment:	RHD Antibody (Center) can be refrigerated at 2-8 °C for up to 6 months. For long term storage, keep at -20 °C.
Expiry Date:	6 months



Western Blotting

Image 1. RHD Antibody (Center) (ABIN1537953 and ABIN2848852) western blot analysis in A549 cell line lysates (35 µg/lane). This demonstrates the RHD antibody detected the RHD protein (arrow).