

Datasheet for ABIN1537956
anti-GGPS1 antibody (AA 174-202)[Go to Product page](#)

1 Image

Overview

Quantity:	400 µL
Target:	GGPS1
Binding Specificity:	AA 174-202
Reactivity:	Human
Host:	Rabbit
Clonality:	Polyclonal
Conjugate:	This GGPS1 antibody is un-conjugated
Application:	Western Blotting (WB)

Product Details

Immunogen:	This GGPS1 antibody is generated from rabbits immunized with a KLH conjugated synthetic peptide between 174-202 amino acids from the Central region of human GGPS1.
Clone:	RB36396
Isotype:	Ig Fraction
Predicted Reactivity:	B, M, Rat
Purification:	This antibody is purified through a protein A column, followed by peptide affinity purification.

Target Details

Target:	GGPS1
Alternative Name:	GGPS1 (GGPS1 Products)

Target Details

Background: This gene is a member of the prenyltransferase family and encodes a protein with geranylgeranyl diphosphate (GGPP) synthase activity. The enzyme catalyzes the synthesis of GGPP from farnesyl diphosphate and isopentenyl diphosphate. GGPP is an important molecule responsible for the C20-prenylation of proteins and for the regulation of a nuclear hormone receptor. Alternate transcriptional splice variants, both protein-coding and non-protein-coding, have been found for this gene. [provided by RefSeq].

Molecular Weight: 34871

Gene ID: 9453

NCBI Accession: [NP_001032354](#)

UniProt: [O95749](#)

Application Details

Application Notes: WB: 1:1000

Restrictions: For Research Use only

Handling

Format: Liquid

Buffer: Purified polyclonal antibody supplied in PBS with 0.09 % (W/V) sodium azide.

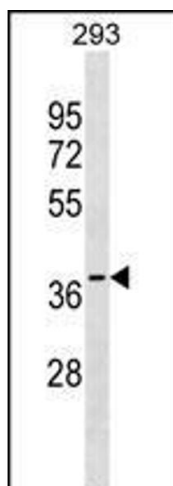
Preservative: Sodium azide

Precaution of Use: This product contains Sodium azide: a POISONOUS AND HAZARDOUS SUBSTANCE which should be handled by trained staff only.

Storage: 4 °C, -20 °C

Storage Comment: GGPS1 Antibody (Center) can be refrigerated at 2-8 °C for up to 6 months. For long term storage, keep at -20 °C.

Expiry Date: 6 months



Western Blotting

Image 1. GGPS1 Antibody (Center) (ABIN1537956 and ABIN2848498) western blot analysis in 293 cell line lysates (35 µg/lane). This demonstrates the GGPS1 antibody detected the GGPS1 protein (arrow).