

Datasheet for ABIN1537964
anti-CD1d antibody (AA 177-206)[Go to Product page](#)

2 Images

Overview

Quantity:	400 µL
Target:	CD1d (CD1D)
Binding Specificity:	AA 177-206
Reactivity:	Human
Host:	Rabbit
Clonality:	Polyclonal
Conjugate:	This CD1d antibody is un-conjugated
Application:	Western Blotting (WB)

Product Details

Immunogen:	This CD1D antibody is generated from rabbits immunized with a KLH conjugated synthetic peptide between 177-206 amino acids from the Central region of human CD1D.
Clone:	RB36769
Isotype:	Ig Fraction
Purification:	This antibody is purified through a protein A column, followed by peptide affinity purification.

Target Details

Target:	CD1d (CD1D)
Alternative Name:	CD1D (CD1D Products)
Background:	This gene encodes a divergent member of the CD1 family of transmembrane glycoproteins,

Target Details

which are structurally related to the major histocompatibility complex (MHC) proteins and form heterodimers with beta-2-microglobulin. The CD1 proteins mediate the presentation of primarily lipid and glycolipid antigens of self or microbial origin to T cells. The human genome contains five CD1 family genes organized in a cluster on chromosome 1. The CD1 family members are thought to differ in their cellular localization and specificity for particular lipid ligands. The protein encoded by this gene localizes to late endosomes and lysosomes via a tyrosine-based motif in the cytoplasmic tail.

Molecular Weight: 37717

Gene ID: 912

NCBI Accession: [NP_001757](#)

UniProt: [P15813](#)

Pathways: [Regulation of Leukocyte Mediated Immunity](#), [Positive Regulation of Immune Effector Process](#)

Application Details

Application Notes: WB: 1:1000. WB: 1:1000

Restrictions: For Research Use only

Handling

Format: Liquid

Buffer: Purified polyclonal antibody supplied in PBS with 0.09 % (W/V) sodium azide.

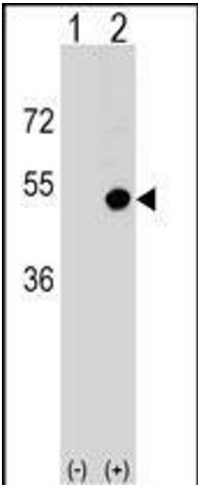
Preservative: Sodium azide

Precaution of Use: This product contains Sodium azide: a POISONOUS AND HAZARDOUS SUBSTANCE which should be handled by trained staff only.

Storage: 4 °C,-20 °C

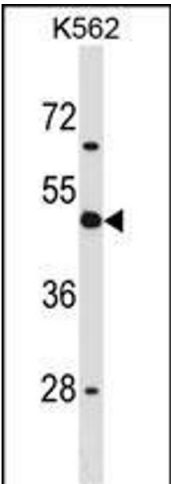
Storage Comment: CD1D Antibody (Center) can be refrigerated at 2-8 °C for up to 6 months. For long term storage, keep at -20 °C.

Expiry Date: 6 months



Western Blotting

Image 1. Western blot analysis of CD1D (arrow) using rabbit polyclonal CD1D Antibody (Center) (ABIN1537964 and ABIN2848667). 293 cell lysates (2 µg/lane) either nontransfected (Lane 1) or transiently transfected (Lane 2) with the CD1D gene.



Western Blotting

Image 2. CD1D Antibody (Center) (ABIN1537964 and ABIN2848667) western blot analysis in K562 cell line lysates (35 µg/lane). This demonstrates the CD1D antibody detected the CD1D protein (arrow).