



[Go to Product page](#)

Datasheet for ABIN1537966  
**anti-GTF2F1 antibody (AA 178-206)**

1 Image

Overview

Quantity:	400 µL
Target:	GTF2F1
Binding Specificity:	AA 178-206
Reactivity:	Human
Host:	Rabbit
Clonality:	Polyclonal
Conjugate:	This GTF2F1 antibody is un-conjugated
Application:	Western Blotting (WB)

Product Details

Immunogen:	This GTF2F1 antibody is generated from rabbits immunized with a KLH conjugated synthetic peptide between 178-206 amino acids from the Central region of human GTF2F1.
Clone:	RB36728
Isotype:	Ig Fraction
Purification:	This antibody is purified through a protein A column, followed by peptide affinity purification.

Target Details

Target:	GTF2F1
Alternative Name:	GTF2F1 ( <a href="#">GTF2F1 Products</a> )
Background:	TFIIIF is a general transcription initiation factor that binds to RNA polymerase II and helps to

## Target Details

---

recruit it to the initiation complex in collaboration with TFIIB. It promotes transcription elongation.

Molecular Weight: 58240

Gene ID: 2962

NCBI Accession: [NP\\_002087](#)

UniProt: [P35269](#)

## Application Details

---

Application Notes: WB: 1:1000

Restrictions: For Research Use only

## Handling

---

Format: Liquid

Buffer: Purified polyclonal antibody supplied in PBS with 0.09 % (W/V) sodium azide.

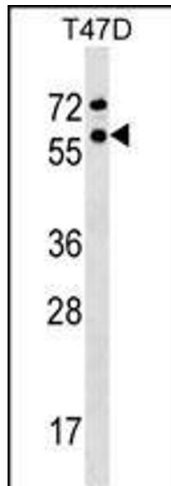
Preservative: Sodium azide

Precaution of Use: This product contains Sodium azide: a POISONOUS AND HAZARDOUS SUBSTANCE which should be handled by trained staff only.

Storage: 4 °C,-20 °C

Storage Comment: GTF2F1 Antibody (Center) can be refrigerated at 2-8 °C for up to 6 months. For long term storage, keep at -20 °C.

Expiry Date: 6 months



### Western Blotting

**Image 1.** GTF2F1 Antibody (Center) (ABIN1537966 and ABIN2848833) western blot analysis in T47D cell line lysates (35 µg/lane). This demonstrates the GTF2F1 antibody detected the GTF2F1 protein (arrow).