

Datasheet for ABIN1537971

**anti-Ribose 5-Phosphate Isomerase A (RPIA) (AA 181-207)
antibody**[Go to Product page](#)**1** Image

Overview

Quantity:	400 µL
Target:	Ribose 5-Phosphate Isomerase A (RPIA)
Binding Specificity:	AA 181-207
Reactivity:	Human
Host:	Rabbit
Clonality:	Polyclonal
Conjugate:	Un-conjugated
Application:	Western Blotting (WB)

Product Details

Immunogen:	This RPIA antibody is generated from rabbits immunized with a KLH conjugated synthetic peptide between 181-207 amino acids from the Central region of human RPIA.
Clone:	RB37624
Isotype:	Ig Fraction
Predicted Reactivity:	B, M, Pig
Purification:	This antibody is purified through a protein A column, followed by peptide affinity purification.

Target Details

Target:	Ribose 5-Phosphate Isomerase A (RPIA)
Alternative Name:	RPIA (RPIA Products)

Target Details

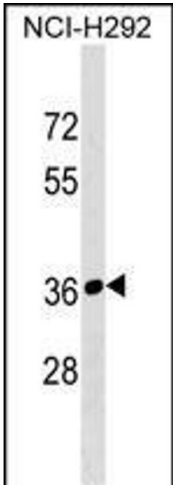
Background:	The protein encoded by this gene is an enzyme, which catalyzes the reversible conversion between ribose-5-phosphate and ribulose-5-phosphate in the pentose-phosphate pathway. This gene is highly conserved in most organisms. The enzyme plays an essential role in the carbohydrate metabolism. Mutations in this gene cause ribose 5-phosphate isomerase deficiency. A pseudogene is found on chromosome 18.
Molecular Weight:	33269
Gene ID:	22934
NCBI Accession:	NP_653164
UniProt:	P49247
Pathways:	Cellular Glucan Metabolic Process , Ribonucleoside Biosynthetic Process

Application Details

Application Notes:	WB: 1:1000
Restrictions:	For Research Use only

Handling

Format:	Liquid
Buffer:	Purified polyclonal antibody supplied in PBS with 0.09 % (W/V) sodium azide.
Preservative:	Sodium azide
Precaution of Use:	This product contains Sodium azide: a POISONOUS AND HAZARDOUS SUBSTANCE which should be handled by trained staff only.
Storage:	4 °C, -20 °C
Storage Comment:	RPIA Antibody (Center) can be refrigerated at 2-8 °C for up to 6 months. For long term storage, keep at -20 °C.
Expiry Date:	6 months



Western Blotting

Image 1. RPIA Antibody (Center) (ABIN1537971 and ABIN2849192) western blot analysis in NCI- cell line lysates (35 µg/lane). This demonstrates the RPIA antibody detected the RPIA protein (arrow).