

Datasheet for ABIN1537984
anti-PRAMEL antibody (AA 184-211)



[Go to Product page](#)

1 Image

Overview

Quantity:	400 µL
Target:	PRAMEL
Binding Specificity:	AA 184-211
Reactivity:	Human
Host:	Rabbit
Clonality:	Polyclonal
Conjugate:	This PRAMEL antibody is un-conjugated
Application:	Western Blotting (WB)

Product Details

Immunogen:	This PRAMEL antibody is generated from rabbits immunized with a KLH conjugated synthetic peptide between 184-211 amino acids from the Central region of human PRAMEL.
Clone:	RB39635
Isotype:	Ig Fraction
Purification:	This antibody is purified through a protein A column, followed by peptide affinity purification.

Target Details

Target:	PRAMEL
Alternative Name:	PRAMEL (PRAMEL Products)
Background:	The function of this protein remains unknown.

Target Details

Gene ID: 649179

UniProt: [Q6ZN90](#)

Application Details

Application Notes: WB: 1:1000

Restrictions: For Research Use only

Handling

Format: Liquid

Buffer: Purified polyclonal antibody supplied in PBS with 0.09 % (W/V) sodium azide.

Preservative: Sodium azide

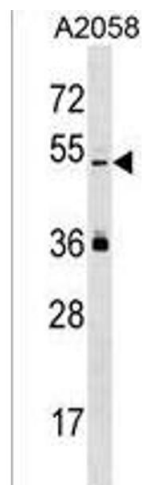
Precaution of Use: This product contains Sodium azide: a POISONOUS AND HAZARDOUS SUBSTANCE which should be handled by trained staff only.

Storage: 4 °C, -20 °C

Storage Comment: PRAMEL Antibody (Center) can be refrigerated at 2-8 °C for up to 6 months. For long term storage, keep at -20 °C.

Expiry Date: 6 months

Images



Western Blotting

Image 1. PREL Antibody (Center) (ABIN1537984 and ABIN2850411) western blot analysis in cell line lysates (35 μ g/lane). This demonstrates the PREL antibody detected the PREL protein (arrow).