



[Go to Product page](#)

Datasheet for ABIN1537999

anti-PRAMEF11 antibody (AA 188-214)

1 Image

Overview

Quantity:	400 µL
Target:	PRAMEF11
Binding Specificity:	AA 188-214
Reactivity:	Human
Host:	Rabbit
Clonality:	Polyclonal
Conjugate:	This PRAMEF11 antibody is un-conjugated
Application:	Western Blotting (WB)

Product Details

Immunogen:	This PRAMEF11 antibody is generated from rabbits immunized with a KLH conjugated synthetic peptide between 188-214 amino acids from the Central region of human PRAMEF11.
Clone:	RB39632
Isotype:	Ig Fraction
Purification:	This antibody is purified through a protein A column, followed by peptide affinity purification.

Target Details

Target:	PRAMEF11
Alternative Name:	PRAMEF11 (PRAMEF11 Products)
Background:	The function of this protein remains unknown.

Target Details

Molecular Weight:	55344
Gene ID:	440560
NCBI Accession:	NP_001139816
UniProt:	O60813

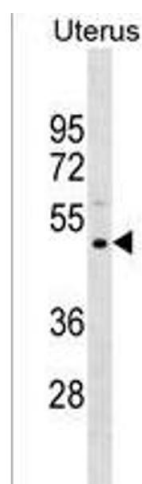
Application Details

Application Notes:	WB: 1:1000
Restrictions:	For Research Use only

Handling

Format:	Liquid
Buffer:	Purified polyclonal antibody supplied in PBS with 0.09 % (W/V) sodium azide.
Preservative:	Sodium azide
Precaution of Use:	This product contains Sodium azide: a POISONOUS AND HAZARDOUS SUBSTANCE which should be handled by trained staff only.
Storage:	4 °C, -20 °C
Storage Comment:	PRAMEF11 Antibody (Center) can be refrigerated at 2-8 °C for up to 6 months. For long term storage, keep at -20 °C.
Expiry Date:	6 months

Images



Western Blotting

Image 1. PREF11 Antibody (Center) (ABIN1537999 and ABIN2850283) western blot analysis in Uterus tissue lysates (35 µg/lane). This demonstrates the PREF11 antibody detected the PREF11 protein (arrow).