

Datasheet for ABIN1538001  
**anti-P2RX6 antibody (AA 198-226)**[Go to Product page](#)

## 1 Image

## Overview

Quantity:	400 µL
Target:	P2RX6
Binding Specificity:	AA 198-226
Reactivity:	Human
Host:	Rabbit
Clonality:	Polyclonal
Conjugate:	This P2RX6 antibody is un-conjugated
Application:	Western Blotting (WB)

## Product Details

Immunogen:	This P2RX6 antibody is generated from rabbits immunized with a KLH conjugated synthetic peptide between 198-226 amino acids from the Central region of human P2RX6.
Clone:	RB37094
Isotype:	Ig Fraction
Purification:	This antibody is purified through a protein A column, followed by peptide affinity purification.

## Target Details

Target:	P2RX6
Alternative Name:	P2RX6 ( <a href="#">P2RX6 Products</a> )
Background:	The protein encoded by this gene belongs to the family of P2X receptors, which are ATP-gated

## Target Details

ion channels and mediate rapid and selective permeability to cations. This gene is predominantly expressed in skeletal muscle, and regulated by p53. The encoded protein is associated with VE-cadherin at the adherens junctions of human umbilical vein endothelial cells. Alternative splicing results in multiple transcript variants. A related pseudogene, which is also located on chromosome 22, has been identified.

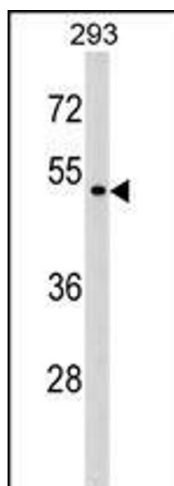
Molecular Weight:	48829
Gene ID:	9127
NCBI Accession:	<a href="#">NP_001153026</a> , <a href="#">NP_005437</a>
UniProt:	<a href="#">O15547</a>

## Application Details

Application Notes:	WB: 1:1000
Restrictions:	For Research Use only

## Handling

Format:	Liquid
Buffer:	Purified polyclonal antibody supplied in PBS with 0.09 % (W/V) sodium azide.
Preservative:	Sodium azide
Precaution of Use:	This product contains Sodium azide: a POISONOUS AND HAZARDOUS SUBSTANCE which should be handled by trained staff only.
Storage:	4 °C,-20 °C
Storage Comment:	P2RX6 Antibody (Center) can be refrigerated at 2-8 °C for up to 6 months. For long term storage, keep at -20 °C.
Expiry Date:	6 months



#### Western Blotting

**Image 1.** P2RX6 Antibody (Center) (ABIN1538001 and ABIN2848759) western blot analysis in 293 cell line lysates (35 µg/lane). This demonstrates the P2RX6 antibody detected the P2RX6 protein (arrow).