

Datasheet for ABIN1538003
anti-FAM82A1 antibody (AA 188-216)[Go to Product page](#)

1 Image

Overview

Quantity:	400 µL
Target:	FAM82A1 (RMDN2)
Binding Specificity:	AA 188-216
Reactivity:	Human
Host:	Rabbit
Clonality:	Polyclonal
Conjugate:	This FAM82A1 antibody is un-conjugated
Application:	Western Blotting (WB)

Product Details

Immunogen:	This RMD2 antibody is generated from rabbits immunized with a KLH conjugated synthetic peptide between 188-216 amino acids from the Central region of human RMD2.
Clone:	RB31470
Isotype:	Ig Fraction
Purification:	This antibody is purified through a protein A column, followed by peptide affinity purification.

Target Details

Target:	FAM82A1 (RMDN2)
Alternative Name:	RMD2 (RMDN2 Products)
Background:	FAM82A1 belongs to the FAM82/RMD family.

Target Details

Molecular Weight:	47399
Gene ID:	151393
NCBI Accession:	NP_001164262 , NP_001164263 , NP_001164264 , NP_653314
UniProt:	Q96LZ7

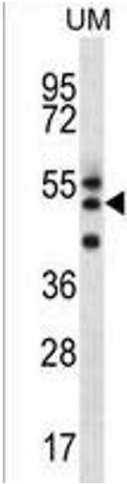
Application Details

Application Notes:	WB: 1:1000
Restrictions:	For Research Use only

Handling

Format:	Liquid
Buffer:	Purified polyclonal antibody supplied in PBS with 0.09 % (W/V) sodium azide.
Preservative:	Sodium azide
Precaution of Use:	This product contains Sodium azide: a POISONOUS AND HAZARDOUS SUBSTANCE which should be handled by trained staff only.
Storage:	4 °C, -20 °C
Storage Comment:	RMD2 Antibody (Center) can be refrigerated at 2-8 °C for up to 6 months. For long term storage, keep at -20 °C.
Expiry Date:	6 months

Images



Western Blotting

Image 1. RMD2 Antibody (Center) (ABIN1538003 and ABIN2849325) western blot analysis in uterus tumor cell line lysates (35 µg/lane). This demonstrates the RMD2 antibody detected the RMD2 protein (arrow).