

Datasheet for ABIN1538005
anti-PPT1 antibody (AA 189-217)[Go to Product page](#)

2 Images

Overview

Quantity:	400 µL
Target:	PPT1
Binding Specificity:	AA 189-217
Reactivity:	Human
Host:	Rabbit
Clonality:	Polyclonal
Conjugate:	This PPT1 antibody is un-conjugated
Application:	Western Blotting (WB)

Product Details

Immunogen:	This PPT1 antibody is generated from rabbits immunized with a KLH conjugated synthetic peptide between 189-217 amino acids from the Central region of human PPT1.
Clone:	RB36183
Isotype:	Ig Fraction
Predicted Reactivity:	Pr
Purification:	This antibody is purified through a protein A column, followed by peptide affinity purification.

Target Details

Target:	PPT1
Alternative Name:	PPT1 (PPT1 Products)

Target Details

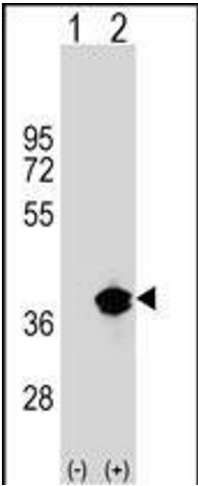
Background:	The protein encoded by this gene is a small glycoprotein involved in the catabolism of lipid-modified proteins during lysosomal degradation. The encoded enzyme removes thioester-linked fatty acyl groups such as palmitate from cysteine residues. Defects in this gene are a cause of infantile neuronal ceroid lipofuscinosis 1 (CLN1, or INCL) and neuronal ceroid lipofuscinosis 4 (CLN4). Two transcript variants encoding different isoforms have been found for this gene.
Molecular Weight:	34193
Gene ID:	5538
NCBI Accession:	NP_000301 , NP_001136076
UniProt:	P50897
Pathways:	SARS-CoV-2 Protein Interactome

Application Details

Application Notes:	WB: 1:1000. WB: 1:1000
Restrictions:	For Research Use only

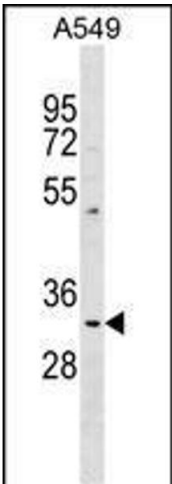
Handling

Format:	Liquid
Buffer:	Purified polyclonal antibody supplied in PBS with 0.09 % (W/V) sodium azide.
Preservative:	Sodium azide
Precaution of Use:	This product contains Sodium azide: a POISONOUS AND HAZARDOUS SUBSTANCE which should be handled by trained staff only.
Storage:	4 °C,-20 °C
Storage Comment:	PPT1 Antibody (Center) can be refrigerated at 2-8 °C for up to 6 months. For long term storage, keep at -20 °C.
Expiry Date:	6 months



Western Blotting

Image 1. Western blot analysis of T1 (arrow) using rabbit polyclonal T1 Antibody (Center) (ABIN1538005 and ABIN2848794). 293 cell lysates (2 µg/lane) either nontransfected (Lane 1) or transiently transfected (Lane 2) with the T1 gene.



Western Blotting

Image 2. T1 Antibody (Center) (ABIN1538005 and ABIN2848794) western blot analysis in A549 cell line lysates (35 µg/lane). This demonstrates the T1 antibody detected the T1 protein (arrow).