

Datasheet for ABIN1538011
anti-PCGF6 antibody (AA 190-217)[Go to Product page](#)

2 Images

Overview

Quantity:	400 µL
Target:	PCGF6
Binding Specificity:	AA 190-217
Reactivity:	Human, Rat
Host:	Rabbit
Clonality:	Polyclonal
Conjugate:	This PCGF6 antibody is un-conjugated
Application:	Western Blotting (WB)

Product Details

Immunogen:	This PCGF6 antibody is generated from rabbits immunized with a KLH conjugated synthetic peptide between 190-217 amino acids from the Central region of human PCGF6.
Clone:	RB39611
Isotype:	Ig Fraction
Predicted Reactivity:	M
Purification:	This antibody is purified through a protein A column, followed by peptide affinity purification.

Target Details

Target:	PCGF6
Alternative Name:	PCGF6 (PCGF6 Products)

Target Details

Background: The protein encoded by this gene contains a RING finger motif, which is most closely related to those of polycomb group (PcG) proteins RNF110/MEL-18 and BMI1. PcG proteins are known to form protein complexes and function as transcription repressors. This protein has been shown to interact with some PcG proteins and act as a transcription repressor. The activity of this protein is found to be regulated by cell cycle dependent phosphorylation. Alternatively spliced transcript variants encoding different isoforms have been identified.

Molecular Weight: 39047

Gene ID: 84108

NCBI Accession: [NP_001011663](#), [NP_115530](#)

UniProt: [Q9BYE7](#)

Application Details

Application Notes: WB: 1:1000. WB: 1:1000

Restrictions: For Research Use only

Handling

Format: Liquid

Buffer: Purified polyclonal antibody supplied in PBS with 0.09 % (W/V) sodium azide.

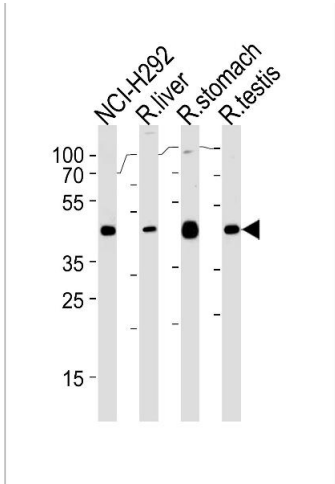
Preservative: Sodium azide

Precaution of Use: This product contains Sodium azide: a POISONOUS AND HAZARDOUS SUBSTANCE which should be handled by trained staff only.

Storage: 4 °C, -20 °C

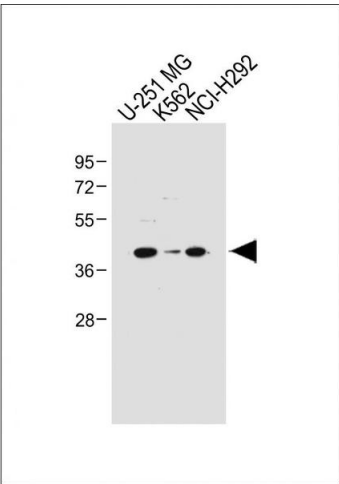
Storage Comment: PCGF6 Antibody (Center) can be refrigerated at 2-8 °C for up to 6 months. For long term storage, keep at -20 °C.

Expiry Date: 6 months



Western Blotting

Image 1. PCGF6 Antibody (Center) (ABIN1538011 and ABIN2850271) western blot analysis in NCI-,rat liver,stomach and testis cell line lysates (35 µg/lane).This demonstrates the PCGF6 antibody detected the PCGF6 protein (arrow).



Western Blotting

Image 2. All lanes : Anti-PCGF6 Antibody (Center) at 1:1000 dilution Lane 1: U-251 MG whole cell lysate Lane 2: K562 whole cell lysate Lane 3: NCI- whole cell lysate Lysates/proteins at 20 µg per lane. Secondary Goat Anti-Rabbit IgG, (H+L), Peroxidase conjugated at 1/10000 dilution. Predicted band size : 39 kDa Blocking/Dilution buffer: 5 % NFDM/TBST.