

Datasheet for ABIN1538018
anti-GDE1 antibody (AA 192-219)

3 Images

[Go to Product page](#)

Overview

Quantity:	400 µL
Target:	GDE1
Binding Specificity:	AA 192-219
Reactivity:	Human, Rat
Host:	Rabbit
Clonality:	Polyclonal
Conjugate:	This GDE1 antibody is un-conjugated
Application:	Western Blotting (WB), Flow Cytometry (FACS)

Product Details

Immunogen:	This GDE1 antibody is generated from rabbits immunized with a KLH conjugated synthetic peptide between 192-219 amino acids of human GDE1.
Clone:	RB37323
Isotype:	IgG
Purification:	This antibody is purified through a protein A column, followed by peptide affinity purification.

Target Details

Target:	GDE1
Alternative Name:	GDE1 (GDE1 Products)
Background:	GDE1 has glycerophosphoinositol phosphodiesterase activity. Has little or no activity towards

Target Details

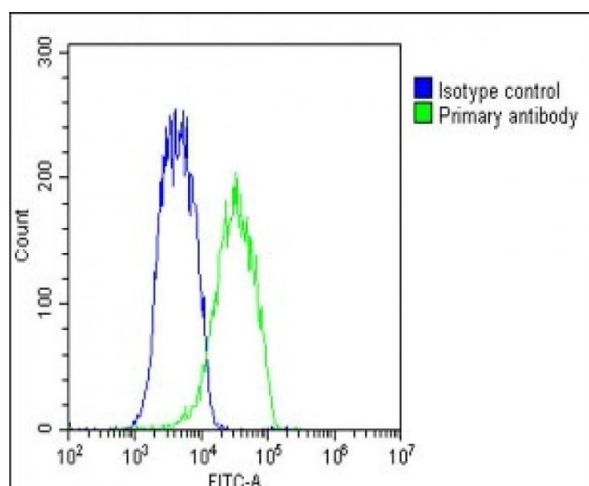
	glycerophosphocholine. GDE1 activity can be modulated by G-protein signaling pathways (By similarity).
Molecular Weight:	37718
Gene ID:	51573
NCBI Accession:	NP_057725
UniProt:	Q9NZC3

Application Details

Application Notes:	WB: 1:1000. WB: 1:1000. FC: 1:25
Restrictions:	For Research Use only

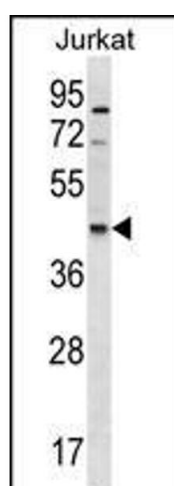
Handling

Format:	Liquid
Buffer:	Purified polyclonal antibody supplied in PBS with 0.09 % (W/V) sodium azide.
Preservative:	Sodium azide
Precaution of Use:	This product contains Sodium azide: a POISONOUS AND HAZARDOUS SUBSTANCE which should be handled by trained staff only.
Storage:	4 °C,-20 °C
Storage Comment:	GDE1 Antibody (Center) can be refrigerated at 2-8 °C for up to 6 months. For long term storage, keep at -20 °C.
Expiry Date:	6 months



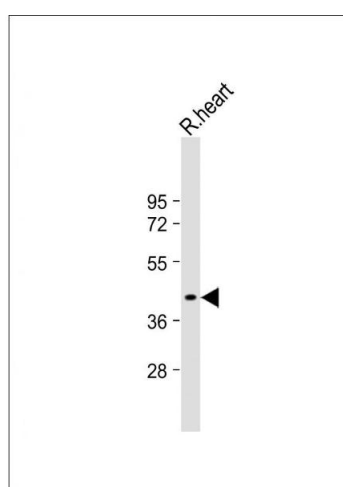
Flow Cytometry

Image 1. Overlay histogram showing Hela cells stained with (ABIN1538018 and ABIN2850097)(green line). The cells were fixed with 2 % paraformaldehyde (10 min) and then permeabilized with 90 % methanol for 10 min. The cells were then incubated in 2 % bovine serum albumin to block non-specific protein-protein interactions followed by the antibody ((ABIN1538018 and ABIN2850097), 1:25 dilution) for 60 min at 37 °C. The secondary antibody used was Goat Anti-Rabbit IgG, DyLight® 488 Conjugated Highly Cross-Adsorbed(1583138) at 1/200 dilution for 40 min at 37 °C. Isotype control antibody (blue line) was rabbit IgG1 (1 μ g/ 1×10^6 cells) used under the same conditions. Acquisition of >10,000 events was performed.



Western Blotting

Image 2. GDE1 Antibody (Center) (ABIN1538018 and ABIN2850097) western blot analysis in Jurkat cell line lysates (35 μ g/lane). This demonstrates the GDE1 antibody detected the GDE1 protein (arrow).



Western Blotting

Image 3. Anti-GDE1 Antibody (Center) at 1:1000 dilution + Rat heart lysate Lysates/proteins at 20 μ g per lane. Secondary Goat Anti-Rabbit IgG, (H+L), Peroxidase conjugated at 1/10000 dilution. Predicted band size : 38 kDa Blocking/Dilution buffer: 5 % NFDm/TBST.