

Datasheet for ABIN1538019  
**anti-SLFN12 antibody (AA 192-220)**[Go to Product page](#)

## 1 Image

## Overview

Quantity:	400 µL
Target:	SLFN12
Binding Specificity:	AA 192-220
Reactivity:	Human
Host:	Rabbit
Clonality:	Polyclonal
Conjugate:	This SLFN12 antibody is un-conjugated
Application:	Western Blotting (WB)

## Product Details

Immunogen:	This SLFN12 antibody is generated from rabbits immunized with a KLH conjugated synthetic peptide between 192-220 amino acids from the Central region of human SLFN12.
Clone:	RB31782
Isotype:	Ig Fraction
Purification:	This antibody is purified through a protein A column, followed by peptide affinity purification.

## Target Details

Target:	SLFN12
Alternative Name:	SLFN12 ( <a href="#">SLFN12 Products</a> )
Background:	Belongs to the Schlafen family.

## Target Details

Molecular Weight:	66972
Gene ID:	55106
NCBI Accession:	<a href="#">NP_060512</a>
UniProt:	<a href="#">Q8IYM2</a>

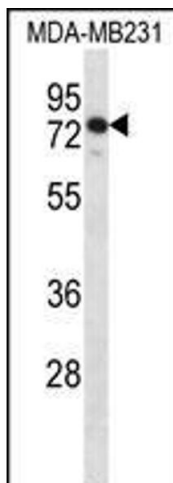
## Application Details

Application Notes:	WB: 1:1000
Restrictions:	For Research Use only

## Handling

Format:	Liquid
Buffer:	Purified polyclonal antibody supplied in PBS with 0.09 % (W/V) sodium azide.
Preservative:	Sodium azide
Precaution of Use:	This product contains Sodium azide: a POISONOUS AND HAZARDOUS SUBSTANCE which should be handled by trained staff only.
Storage:	4 °C, -20 °C
Storage Comment:	SLFN12 Antibody (Center) can be refrigerated at 2-8 °C for up to 6 months. For long term storage, keep at -20 °C.
Expiry Date:	6 months

## Images



### Western Blotting

**Image 1.** SLFN12 Antibody (Center) (ABIN1538019 and ABIN2849329) western blot analysis in MDA-M cell line lysates (35 µg/lane). This demonstrates the SLFN12 antibody detected the SLFN12 protein (arrow).