

Datasheet for ABIN1538023
anti-PKD2L2 antibody (AA 193-219)[Go to Product page](#)

1 Image

Overview

Quantity:	400 µL
Target:	PKD2L2
Binding Specificity:	AA 193-219
Reactivity:	Human
Host:	Rabbit
Clonality:	Polyclonal
Conjugate:	This PKD2L2 antibody is un-conjugated
Application:	Western Blotting (WB)

Product Details

Immunogen:	This PKD2L2 antibody is generated from rabbits immunized with a KLH conjugated synthetic peptide between 193-219 amino acids from the Central region of human PKD2L2.
Clone:	RB38332
Isotype:	Ig Fraction
Purification:	This antibody is purified through a protein A column, followed by peptide affinity purification.

Target Details

Target:	PKD2L2
Alternative Name:	PKD2L2 (PKD2L2 Products)
Background:	PKD2L2 may function as a subunit of a cation channel and play a role in fertilization.

Target Details

Molecular Weight:	73790
Gene ID:	27039
NCBI Accession:	NP_001245377 , NP_001245378 , NP_055201
UniProt:	Q9NZM6

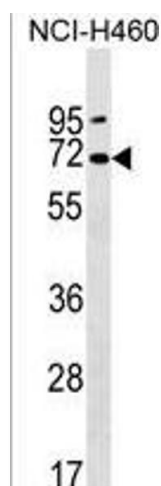
Application Details

Application Notes:	WB: 1:1000
Restrictions:	For Research Use only

Handling

Format:	Liquid
Buffer:	Purified polyclonal antibody supplied in PBS with 0.09 % (W/V) sodium azide.
Preservative:	Sodium azide
Precaution of Use:	This product contains Sodium azide: a POISONOUS AND HAZARDOUS SUBSTANCE which should be handled by trained staff only.
Storage:	4 °C, -20 °C
Storage Comment:	PKD2L2 Antibody (Center) can be refrigerated at 2-8 °C for up to 6 months. For long term storage, keep at -20 °C.
Expiry Date:	6 months

Images



Western Blotting

Image 1. PKD2L2 Antibody (Center) (ABIN1538023 and ABIN2850127) western blot analysis in NCI- cell line lysates (35 µg/lane). This demonstrates the PKD2L2 antibody detected the PKD2L2 protein (arrow).