

Datasheet for ABIN1538031
anti-KCNF1 antibody (AA 195-221)[Go to Product page](#)

1 Image

Overview

Quantity:	400 µL
Target:	KCNF1
Binding Specificity:	AA 195-221
Reactivity:	Human
Host:	Rabbit
Clonality:	Polyclonal
Conjugate:	This KCNF1 antibody is un-conjugated
Application:	Western Blotting (WB)

Product Details

Immunogen:	This KCNF1 antibody is generated from rabbits immunized with a KLH conjugated synthetic peptide between 195-221 amino acids from the Central region of human KCNF1.
Clone:	RB38277
Isotype:	Ig Fraction
Purification:	This antibody is purified through a protein A column, followed by peptide affinity purification.

Target Details

Target:	KCNF1
Alternative Name:	KCNF1 (KCNF1 Products)
Background:	Voltage-gated potassium (Kv) channels represent the most complex class of voltage-gated ion

Target Details

channels from both functional and structural standpoints. Their diverse functions include regulating neurotransmitter release, heart rate, insulin secretion, neuronal excitability, epithelial electrolyte transport, smooth muscle contraction, and cell volume. This gene encodes a member of the potassium channel, voltage-gated, subfamily F. This gene is intronless and expressed in all tissues tested, including the heart, skeletal muscle, brain, kidney, and pancreas. [provided by RefSeq].

Molecular Weight: 55584

Gene ID: 3754

NCBI Accession: [NP_002227](#)

UniProt: [Q9H3M0](#)

Application Details

Application Notes: WB: 1:1000

Restrictions: For Research Use only

Handling

Format: Liquid

Buffer: Purified polyclonal antibody supplied in PBS with 0.09 % (W/V) sodium azide.

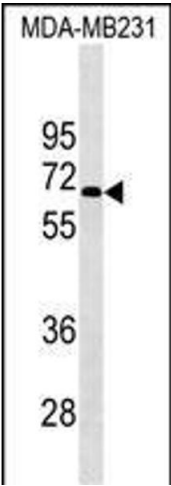
Preservative: Sodium azide

Precaution of Use: This product contains Sodium azide: a POISONOUS AND HAZARDOUS SUBSTANCE which should be handled by trained staff only.

Storage: 4 °C, -20 °C

Storage Comment: KCNF1 Antibody (Center) can be refrigerated at 2-8 °C for up to 6 months. For long term storage, keep at -20 °C.

Expiry Date: 6 months



Western Blotting

Image 1. KCNF1 Antibody (Center) (ABIN1538031 and ABIN2849487) western blot analysis in MDA-M cell line lysates (35 µg/lane). This demonstrates the KCNF1 antibody detected the KCNF1 protein (arrow).