

Datasheet for ABIN1538039  
**anti-SQRDL antibody (AA 197-224)**[Go to Product page](#)

## 1 Image

## Overview

Quantity:	400 µL
Target:	SQRDL
Binding Specificity:	AA 197-224
Reactivity:	Human
Host:	Rabbit
Clonality:	Polyclonal
Conjugate:	This SQRDL antibody is un-conjugated
Application:	Western Blotting (WB)

## Product Details

Immunogen:	This SQRDL antibody is generated from rabbits immunized with a KLH conjugated synthetic peptide between 197-224 amino acids from the Central region of human SQRDL.
Clone:	RB36626
Isotype:	Ig Fraction
Purification:	This antibody is purified through a protein A column, followed by peptide affinity purification.

## Target Details

Target:	SQRDL
Alternative Name:	SQRDL ( <a href="#">SQRDL Products</a> )
Background:	SQRDL catalyzes the oxidation of hydrogen sulfide, with the help of a quinone (By similarity).

### Target Details

Molecular Weight:	49961
Gene ID:	58472
NCBI Accession:	<a href="#">NP_001258142</a> , <a href="#">NP_067022</a>
UniProt:	<a href="#">Q9Y6N5</a>

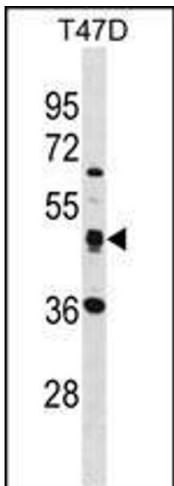
### Application Details

Application Notes:	WB: 1:1000
Restrictions:	For Research Use only

### Handling

Format:	Liquid
Buffer:	Purified polyclonal antibody supplied in PBS with 0.09 % (W/V) sodium azide.
Preservative:	Sodium azide
Precaution of Use:	This product contains Sodium azide: a POISONOUS AND HAZARDOUS SUBSTANCE which should be handled by trained staff only.
Storage:	4 °C,-20 °C
Storage Comment:	SQRDL Antibody (Center) can be refrigerated at 2-8 °C for up to 6 months. For long term storage, keep at -20 °C.
Expiry Date:	6 months

### Images



#### Western Blotting

**Image 1.** SQRDL Antibody (Center) (ABIN1538039 and ABIN2848534) western blot analysis in T47D cell line lysates (35 µg/lane). This demonstrates the SQRDL antibody detected the SQRDL protein (arrow).