

Datasheet for ABIN1538045  
**anti-MBOAT2 antibody (AA 198-227)**[Go to Product page](#)

## 1 Image

## Overview

Quantity:	400 µL
Target:	MBOAT2
Binding Specificity:	AA 198-227
Reactivity:	Human
Host:	Rabbit
Clonality:	Polyclonal
Conjugate:	This MBOAT2 antibody is un-conjugated
Application:	Western Blotting (WB)

## Product Details

Immunogen:	This MBOAT2 antibody is generated from rabbits immunized with a KLH conjugated synthetic peptide between 198-227 amino acids from the Central region of human MBOAT2.
Clone:	RB32915
Isotype:	Ig Fraction
Purification:	This antibody is purified through a protein A column, followed by peptide affinity purification.

## Target Details

Target:	MBOAT2
Alternative Name:	MBOAT2 ( <a href="#">MBOAT2 Products</a> )
Background:	Acyltransferase which mediates the conversion of lysophosphatidylethanolamine (1-acyl-sn-

## Target Details

glycero-3-phosphoethanolamine or LPE) into phosphatidylethanolamine (1,2-diacyl-sn-glycero-3-phosphoethanolamine or PE) (LPEAT activity). Catalyzes also the acylation of lysophosphatidic acid (LPA) into phosphatidic acid (PA) (LPAAT activity). Has also a very weak lysophosphatidylcholine acyltransferase (LPCAT activity). Prefers oleoyl-CoA as the acyl donor. Lysophospholipid acyltransferases (LPLATs) catalyze the reacylation step of the phospholipid remodeling pathway also known as the Lands cycle.

Molecular Weight: 59527

Gene ID: 129642

NCBI Accession: [NP\\_620154](#)

UniProt: [Q6ZWT7](#)

## Application Details

Application Notes: WB: 1:1000

Restrictions: For Research Use only

## Handling

Format: Liquid

Buffer: Purified polyclonal antibody supplied in PBS with 0.09 % (W/V) sodium azide.

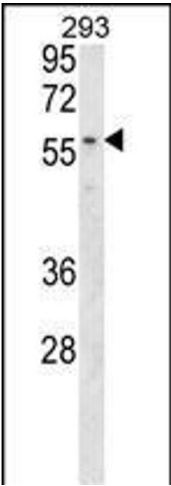
Preservative: Sodium azide

Precaution of Use: This product contains Sodium azide: a POISONOUS AND HAZARDOUS SUBSTANCE which should be handled by trained staff only.

Storage: 4 °C, -20 °C

Storage Comment: MBOAT2 Antibody (Center) can be refrigerated at 2-8 °C for up to 6 months. For long term storage, keep at -20 °C.

Expiry Date: 6 months



Western Blotting

**Image 1.** MBOAT2 Antibody (Center) (ABIN1538045 and ABIN2849330) western blot analysis in 293 cell line lysates (35 µg/lane). This demonstrates the MBOAT2 antibody detected the MBOAT2 protein (arrow).