



Datasheet for ABIN1538053
anti-POLR3C antibody (AA 202-230)



[Go to Product page](#)

2 Images

Overview

Quantity:	400 µL
Target:	POLR3C
Binding Specificity:	AA 202-230
Reactivity:	Human
Host:	Rabbit
Clonality:	Polyclonal
Conjugate:	This POLR3C antibody is un-conjugated
Application:	Western Blotting (WB)

Product Details

Immunogen:	This POLR3C antibody is generated from rabbits immunized with a KLH conjugated synthetic peptide between 202-230 amino acids from the Central region of human POLR3C.
Clone:	RB36947
Isotype:	Ig Fraction
Purification:	This antibody is purified through a protein A column, followed by peptide affinity purification.

Target Details

Target:	POLR3C
Alternative Name:	POLR3C (POLR3C Products)
Background:	DNA-dependent RNA polymerase catalyzes the transcription of DNA into RNA using the four

Target Details

ribonucleoside triphosphates as substrates. Specific core component of RNA polymerase III which synthesizes small RNAs, such as 5S rRNA and tRNAs. May direct with other members of the subcomplex RNA Pol III binding to the TFIIIB-DNA complex via the interactions between TFIIIB and POLR3F. May be involved either in the recruitment and stabilization of the subcomplex within RNA polymerase III, or in stimulating catalytic functions of other subunits during initiation. Plays a key role in sensing and limiting infection by intracellular bacteria and DNA viruses. Acts as nuclear and cytosolic DNA sensor involved in innate immune response. Can sense non-self dsDNA that serves as template for transcription into dsRNA. The non-self RNA polymerase III transcripts, such as Epstein-Barr virus-encoded RNAs (EBERs) induce type I interferon and NF-Kappa-B through the RIG-I pathway.

Molecular Weight: 60612

Gene ID: 10623

NCBI Accession: [NP_006459](#)

UniProt: [Q9BUI4](#)

Application Details

Application Notes: WB: 1:1000. WB: 1:1000

Restrictions: For Research Use only

Handling

Format: Liquid

Buffer: Purified polyclonal antibody supplied in PBS with 0.09 % (W/V) sodium azide.

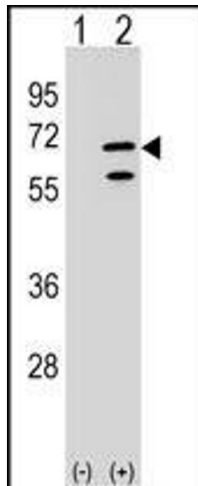
Preservative: Sodium azide

Precaution of Use: This product contains Sodium azide: a POISONOUS AND HAZARDOUS SUBSTANCE which should be handled by trained staff only.

Storage: 4 °C, -20 °C

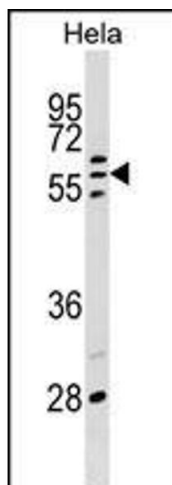
Storage Comment: POLR3C Antibody (Center) can be refrigerated at 2-8 °C for up to 6 months. For long term storage, keep at -20 °C.

Expiry Date: 6 months



Western Blotting

Image 1. Western blot analysis of POLR3C (arrow) using rabbit polyclonal POLR3C Antibody (Center) (ABIN1538053 and ABIN2848864). 293 cell lysates (2 µg/lane) either nontransfected (Lane 1) or transiently transfected (Lane 2) with the POLR3C gene.



Western Blotting

Image 2. POLR3C Antibody (Center) (ABIN1538053 and ABIN2848864) western blot analysis in HeLa cell line lysates (35 µg/lane). This demonstrates the POLR3C antibody detected the POLR3C protein (arrow).