

Datasheet for ABIN1538059
anti-WEE1 antibody (AA 202-230)[Go to Product page](#)

1 Image

Overview

Quantity:	400 µL
Target:	WEE1
Binding Specificity:	AA 202-230
Reactivity:	Human
Host:	Rabbit
Clonality:	Polyclonal
Application:	Western Blotting (WB)

Product Details

Immunogen:	This Mouse Wee1 antibody is generated from rabbits immunized with a KLH conjugated synthetic peptide between 202-230 amino acids from the Central region of mouse Wee1.
Clone:	RB39511
Isotype:	Ig Fraction
Predicted Reactivity:	Rat
Purification:	This antibody is purified through a protein A column, followed by peptide affinity purification.

Target Details

Target:	WEE1
Alternative Name:	Wee1 (WEE1 Products)
Background:	Wee1 may act as a negative regulator of entry into mitosis (G2 to M transition) by protecting

Target Details

the nucleus from cytoplasmically activated cyclin B1-complexed CDK1 before the onset of mitosis. Its activity increases during S and G2 phases and decreases at M phase when it is hyperphosphorylated. A correlated decrease in protein level occurs at M/G1 phase, probably due to its degradation. Specifically phosphorylates and inactivates cyclin B1-complexed CDK1 reaching a maximum during G2 phase and a minimum as cells enter M phase. Phosphorylation of cyclin B1-CDK1 occurs exclusively on 'Tyr-15' and phosphorylation of monomeric CDK1 does not occur (By similarity).

Molecular Weight: 71578

Gene ID: 22390

NCBI Accession: [NP_033542](#)

UniProt: [P47810](#)

Pathways: [Cell Division Cycle](#), [Mitotic G1-G1/S Phases](#), [M Phase](#)

Application Details

Application Notes: WB: 1:1000

Restrictions: For Research Use only

Handling

Format: Liquid

Buffer: Purified polyclonal antibody supplied in PBS with 0.09 % (W/V) sodium azide.

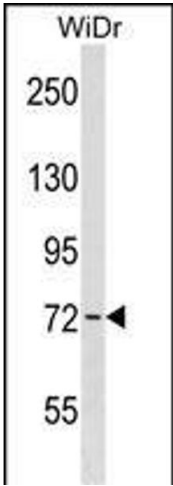
Preservative: Sodium azide

Precaution of Use: This product contains Sodium azide: a POISONOUS AND HAZARDOUS SUBSTANCE which should be handled by trained staff only.

Storage: 4 °C,-20 °C

Storage Comment: Mouse Wee1 Antibody (Center) can be refrigerated at 2-8 °C for up to 6 months. For long term storage, keep at -20 °C.

Expiry Date: 6 months



Western Blotting

Image 1. Mouse Wee1 Antibody (Center) (ABIN1538059 and ABIN2850397) western blot analysis in WiDr cell line lysates (35 µg/lane). This demonstrates the Wee1 antibody detected the Wee1 protein (arrow).