

Datasheet for ABIN1538065
anti-LHX8 antibody (AA 205-232)[Go to Product page](#)

1 Image

Overview

Quantity:	400 µL
Target:	LHX8
Binding Specificity:	AA 205-232
Reactivity:	Human
Host:	Rabbit
Clonality:	Polyclonal
Application:	Western Blotting (WB)

Product Details

Immunogen:	This LHX8 antibody is generated from rabbits immunized with a KLH conjugated synthetic peptide between 205-232 amino acids from the Central region of human LHX8.
Clone:	RB38484
Isotype:	Ig Fraction
Predicted Reactivity:	M
Purification:	This antibody is purified through a protein A column, followed by peptide affinity purification.

Target Details

Target:	LHX8
Alternative Name:	LHX8 (LHX8 Products)
Background:	Members of the LIM homeobox gene family, such as LHX8, encode transcription regulators that

Target Details

share common structural features. They all contain 2 tandemly repeated cysteine-rich double-zinc finger motifs, called LIM domains, in addition to a homeodomain. The homeodomain is a DNA-binding domain, and the LIM domains are essential for regulating the activity of these molecules by interacting with other proteins. Members of the LIM homeobox gene family are required for the patterning or the specification and differentiation of different cell types during embryonic development (Zhao et al., 1999 [PubMed 10611327]).

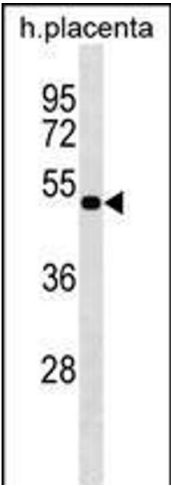
Molecular Weight:	39301
Gene ID:	431707
NCBI Accession:	NP_001001933 , NP_001243043
UniProt:	Q68G74

Application Details

Application Notes:	WB: 1:1000
Restrictions:	For Research Use only

Handling

Format:	Liquid
Buffer:	Purified polyclonal antibody supplied in PBS with 0.09 % (W/V) sodium azide.
Preservative:	Sodium azide
Precaution of Use:	This product contains Sodium azide: a POISONOUS AND HAZARDOUS SUBSTANCE which should be handled by trained staff only.
Storage:	4 °C, -20 °C
Storage Comment:	LHX8 Antibody (Center) can be refrigerated at 2-8 °C for up to 6 months. For long term storage, keep at -20 °C.
Expiry Date:	6 months



Western Blotting

Image 1. LHX8 Antibody (Center) (ABIN1538065 and ABIN2850009) western blot analysis in human placenta tissue lysates (35 µg/lane). This demonstrates the LHX8 antibody detected the LHX8 protein (arrow).