

Datasheet for ABIN1538067
anti-RGS11 antibody (AA 205-234)[Go to Product page](#)

1 Image

Overview

Quantity:	400 µL
Target:	RGS11
Binding Specificity:	AA 205-234
Reactivity:	Human
Host:	Rabbit
Clonality:	Polyclonal
Application:	Western Blotting (WB)

Product Details

Immunogen:	This RGS11 antibody is generated from rabbits immunized with a KLH conjugated synthetic peptide between 205-234 amino acids from the Central region of human RGS11.
Clone:	RB36798
Isotype:	Ig Fraction
Purification:	This antibody is purified through a protein A column, followed by peptide affinity purification.

Target Details

Target:	RGS11
Alternative Name:	RGS11 (RGS11 Products)
Background:	The protein encoded by this gene belongs to the RGS (regulator of G protein signaling) family. Members of the RGS family act as GTPase-activating proteins on the alpha subunits of heterotrimeric, signal-transducing G proteins. This protein inhibits signal transduction by

Target Details

increasing the GTPase activity of G protein alpha subunits, thereby driving them into their inactive GDP-bound form. Alternative splicing occurs at this locus and two transcript variants encoding distinct isoforms have been identified.

Molecular Weight: 52946

Gene ID: 8786

NCBI Accession: [NP_003825](#), [NP_899180](#)

UniProt: [O94810](#)

Pathways: [Myometrial Relaxation and Contraction](#), [Regulation of G-Protein Coupled Receptor Protein Signaling](#)

Application Details

Application Notes: WB: 1:1000

Restrictions: For Research Use only

Handling

Format: Liquid

Buffer: Purified polyclonal antibody supplied in PBS with 0.09 % (W/V) sodium azide.

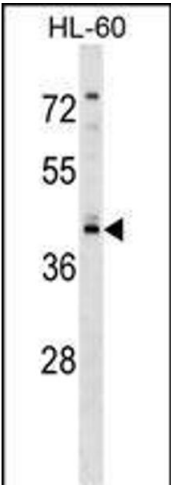
Preservative: Sodium azide

Precaution of Use: This product contains Sodium azide: a POISONOUS AND HAZARDOUS SUBSTANCE which should be handled by trained staff only.

Storage: 4 °C,-20 °C

Storage Comment: RGS11 Antibody (Center) can be refrigerated at 2-8 °C for up to 6 months. For long term storage, keep at -20 °C.

Expiry Date: 6 months



Western Blotting

Image 1. RGS11 Antibody (Center) (ABIN1538067 and ABIN2848674) western blot analysis in HL-60 cell line lysates (35 µg/lane). This demonstrates the RGS11 antibody detected the RGS11 protein (arrow).