

Datasheet for ABIN1538076
anti-NKX3-2 antibody (AA 208-235)[Go to Product page](#)

1 Image

Overview

Quantity:	400 µL
Target:	NKX3-2
Binding Specificity:	AA 208-235
Reactivity:	Human
Host:	Rabbit
Clonality:	Polyclonal
Conjugate:	This NKX3-2 antibody is un-conjugated
Application:	Western Blotting (WB)

Product Details

Immunogen:	This NKX3-2 antibody is generated from rabbits immunized with a KLH conjugated synthetic peptide between 208-235 amino acids from the Central region of human NKX3-2.
Clone:	RB37729
Isotype:	Ig Fraction
Predicted Reactivity:	M, X
Purification:	This antibody is purified through a protein A column, followed by peptide affinity purification.

Target Details

Target:	NKX3-2
Alternative Name:	NKX3-2 (NKX3-2 Products)

Target Details

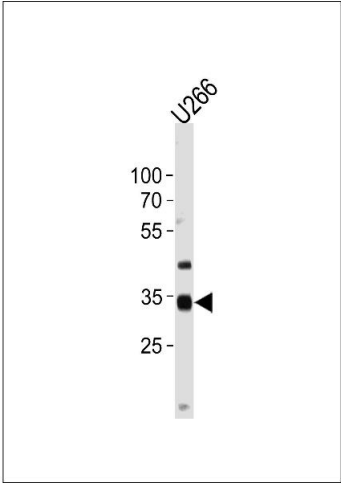
Background:	This gene encodes a member of the NK family of homeobox-containing proteins. The encoded protein may play a role in skeletal development.
Molecular Weight:	34814
Gene ID:	579
NCBI Accession:	NP_001180
UniProt:	P78367

Application Details

Application Notes:	WB: 1:1000
Restrictions:	For Research Use only

Handling

Format:	Liquid
Buffer:	Purified polyclonal antibody supplied in PBS with 0.09 % (W/V) sodium azide.
Preservative:	Sodium azide
Precaution of Use:	This product contains Sodium azide: a POISONOUS AND HAZARDOUS SUBSTANCE which should be handled by trained staff only.
Storage:	4 °C,-20 °C
Storage Comment:	NKX3-2 Antibody (Center) can be refrigerated at 2-8 °C for up to 6 months. For long term storage, keep at -20 °C.
Expiry Date:	6 months



Western Blotting

Image 1. NKX3-2 Antibody (Center) (ABIN1538076 and ABIN2849276) western blot analysis in cell line lysates (35 µg/lane). This demonstrates the NKX3-2 antibody detected the NKX3-2 protein (arrow).