

Datasheet for ABIN1538078
anti-FBLL1 antibody (AA 209-236)[Go to Product page](#)

1 Image

Overview

Quantity:	400 µL
Target:	FBLL1
Binding Specificity:	AA 209-236
Reactivity:	Human
Host:	Rabbit
Clonality:	Polyclonal
Conjugate:	This FBLL1 antibody is un-conjugated
Application:	Western Blotting (WB)

Product Details

Immunogen:	This FBLL1 antibody is generated from rabbits immunized with a KLH conjugated synthetic peptide between 209-236 amino acids from the Central region of human FBLL1.
Clone:	RB38769
Isotype:	Ig Fraction
Predicted Reactivity:	M
Purification:	This antibody is purified through a protein A column, followed by peptide affinity purification.

Target Details

Target:	FBLL1
Alternative Name:	FBLL1 (FBLL1 Products)

Target Details

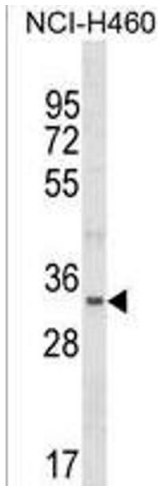
Background:	FBLL1 is involved in pre-rRNA processing. Utilizes the methyl donor S-adenosyl-L-methionine to catalyze the site-specific 2'-hydroxyl methylation of ribose moieties in pre-ribosomal RNA (By similarity).
Molecular Weight:	34803
Gene ID:	345630
UniProt:	A6NHQ2

Application Details

Application Notes:	WB: 1:1000
Restrictions:	For Research Use only

Handling

Format:	Liquid
Buffer:	Purified polyclonal antibody supplied in PBS with 0.09 % (W/V) sodium azide.
Preservative:	Sodium azide
Precaution of Use:	This product contains Sodium azide: a POISONOUS AND HAZARDOUS SUBSTANCE which should be handled by trained staff only.
Storage:	4 °C,-20 °C
Storage Comment:	FBLL1 Antibody (Center) can be refrigerated at 2-8 °C for up to 6 months. For long term storage, keep at -20 °C.
Expiry Date:	6 months



Western Blotting

Image 1. FBLL1 Antibody (Center) (ABIN1538078 and ABIN2849930) western blot analysis in NCI- cell line lysates (35 µg/lane). This demonstrates the FBLL1 Antibody detected the FBLL1 protein (arrow).