

Datasheet for ABIN1538086
anti-TDP1 antibody (AA 212-239)[Go to Product page](#)

1 Image

Overview

Quantity:	400 µL
Target:	TDP1
Binding Specificity:	AA 212-239
Reactivity:	Human, Mouse
Host:	Rabbit
Clonality:	Polyclonal
Conjugate:	This TDP1 antibody is un-conjugated
Application:	Western Blotting (WB)

Product Details

Immunogen:	This TDP1 antibody is generated from rabbits immunized with a KLH conjugated synthetic peptide between 212-239 amino acids from the Central region of human TDP1.
Clone:	RB36293
Isotype:	Ig Fraction
Purification:	This antibody is purified through a protein A column, followed by peptide affinity purification.

Target Details

Target:	TDP1
Alternative Name:	TDP1 (TDP1 Products)
Background:	The protein encoded by this gene is involved in repairing stalled topoisomerase I-DNA

Target Details

complexes by catalyzing the hydrolysis of the phosphodiester bond between the tyrosine residue of topoisomerase I and the 3-prime phosphate of DNA. This protein may also remove glycolate from single-stranded DNA containing 3-prime phosphoglycolate, suggesting a role in repair of free-radical mediated DNA double-strand breaks. This gene is a member of the phospholipase D family and contains two PLD phosphodiesterase domains. Mutations in this gene are associated with the disease spinocerebellar ataxia with axonal neuropathy (SCAN1). While several transcript variants may exist for this gene, the full-length natures of only two have been described to date. These two represent the major variants of this gene and encode the same isoform.

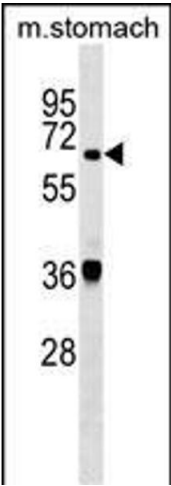
Molecular Weight:	68420
Gene ID:	55775
NCBI Accession:	NP_001008744 , NP_060789
UniProt:	Q9NUW8

Application Details

Application Notes:	WB: 1:1000
Restrictions:	For Research Use only

Handling

Format:	Liquid
Buffer:	Purified polyclonal antibody supplied in PBS with 0.09 % (W/V) sodium azide.
Preservative:	Sodium azide
Precaution of Use:	This product contains Sodium azide: a POISONOUS AND HAZARDOUS SUBSTANCE which should be handled by trained staff only.
Storage:	4 °C, -20 °C
Storage Comment:	TDP1 Antibody (Center) can be refrigerated at 2-8 °C for up to 6 months. For long term storage, keep at -20 °C.
Expiry Date:	6 months



Western Blotting

Image 1. TDP1 Antibody (Center) (ABIN1538086 and ABIN2849232) western blot analysis in mouse stomach tissue lysates (35 µg/lane). This demonstrates the TDP1 antibody detected the TDP1 protein (arrow).