

Datasheet for ABIN1538087
anti-POLA2 antibody (AA 212-240)



[Go to Product page](#)

1 Image

Overview

Quantity:	400 µL
Target:	POLA2
Binding Specificity:	AA 212-240
Reactivity:	Human
Host:	Rabbit
Clonality:	Polyclonal
Conjugate:	This POLA2 antibody is un-conjugated
Application:	Western Blotting (WB)

Product Details

Immunogen:	This POLA2 antibody is generated from rabbits immunized with a KLH conjugated synthetic peptide between 212-240 amino acids from the Central region of human POLA2.
Clone:	RB37021
Isotype:	Ig Fraction
Predicted Reactivity:	B, Rat
Purification:	This antibody is purified through a protein A column, followed by peptide affinity purification.

Target Details

Target:	POLA2
Alternative Name:	POLA2 (POLA2 Products)

Target Details

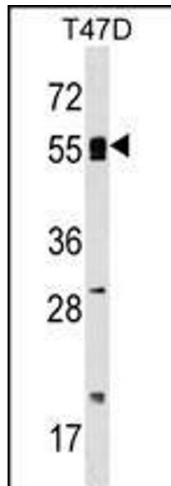
Background:	POLA2 may play an essential role at the early stage of chromosomal DNA replication by coupling the polymerase alpha/primase complex to the cellular replication machinery (By similarity).
Molecular Weight:	65948
Gene ID:	23649
NCBI Accession:	NP_002680
UniProt:	Q14181
Pathways:	Telomere Maintenance , Mitotic G1-G1/S Phases , DNA Replication , Protein targeting to Nucleus , Synthesis of DNA , SARS-CoV-2 Protein Interactome

Application Details

Application Notes:	WB: 1:1000
Restrictions:	For Research Use only

Handling

Format:	Liquid
Buffer:	Purified polyclonal antibody supplied in PBS with 0.09 % (W/V) sodium azide.
Preservative:	Sodium azide
Precaution of Use:	This product contains Sodium azide: a POISONOUS AND HAZARDOUS SUBSTANCE which should be handled by trained staff only.
Storage:	4 °C,-20 °C
Storage Comment:	POLA2 Antibody (Center) can be refrigerated at 2-8 °C for up to 6 months. For long term storage, keep at -20 °C.
Expiry Date:	6 months



Western Blotting

Image 1. POLA2 Antibody (Center) (ABIN1538087 and ABIN2848932) western blot analysis in T47D cell line lysates (35 µg/lane). This demonstrates the POLA2 antibody detected the POLA2 protein (arrow).