



[Go to Product page](#)

Datasheet for ABIN1538090

## anti-PRAMEF14 antibody (AA 213-241)

### 1 Image

#### Overview

Quantity:	400 µL
Target:	PRAMEF14
Binding Specificity:	AA 213-241
Reactivity:	Human
Host:	Rabbit
Clonality:	Polyclonal
Conjugate:	This PRAMEF14 antibody is un-conjugated
Application:	Western Blotting (WB)

#### Product Details

Immunogen:	This PRAMEF14 antibody is generated from rabbits immunized with a KLH conjugated synthetic peptide between 213-241 amino acids from the Central region of human PRAMEF14.
Clone:	RB36721
Isotype:	Ig Fraction
Purification:	This antibody is purified through a protein A column, followed by peptide affinity purification.

#### Target Details

Target:	PRAMEF14
Alternative Name:	PRAMEF14 ( <a href="#">PRAMEF14 Products</a> )
Molecular Weight:	49433

## Target Details

Gene ID: 729528

UniProt: [Q5SWL7](#)

## Application Details

Application Notes: WB: 1:1000

Restrictions: For Research Use only

## Handling

Format: Liquid

Buffer: Purified polyclonal antibody supplied in PBS with 0.09 % (W/V) sodium azide.

Preservative: Sodium azide

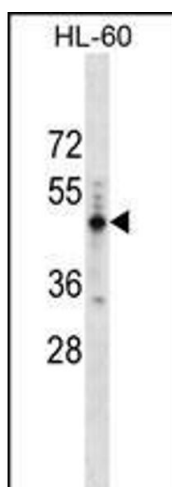
Precaution of Use: This product contains Sodium azide: a POISONOUS AND HAZARDOUS SUBSTANCE which should be handled by trained staff only.

Storage: 4 °C, -20 °C

Storage Comment: PRAMEF14 Antibody (Center) can be refrigerated at 2-8 °C for up to 6 months. For long term storage, keep at -20 °C.

Expiry Date: 6 months

## Images



### Western Blotting

**Image 1.** PREF14 Antibody (Center) (ABIN1538090 and ABIN2848644) western blot analysis in HL-60 cell line lysates (35 µg/lane). This demonstrates the PREF14 antibody detected the PREF14 protein (arrow).