

Datasheet for ABIN1538103
anti-SRPX antibody (AA 218-246)[Go to Product page](#)

1 Image

Overview

Quantity:	400 µL
Target:	SRPX
Binding Specificity:	AA 218-246
Reactivity:	Human
Host:	Rabbit
Clonality:	Polyclonal
Conjugate:	This SRPX antibody is un-conjugated
Application:	Western Blotting (WB)

Product Details

Immunogen:	This SRPX antibody is generated from rabbits immunized with a KLH conjugated synthetic peptide between 218-246 amino acids from the Central region of human SRPX.
Clone:	RB36479
Isotype:	Ig Fraction
Purification:	This antibody is purified through a protein A column, followed by peptide affinity purification.

Target Details

Target:	SRPX
Alternative Name:	SRPX (SRPX Products)
Background:	SRPX may be involved in phagocytosis during disk shedding, cell adhesion to cells other than

Target Details

the pigment epithelium or signal transduction.

Gene ID:	8406
NCBI Accession:	NP_001164221 , NP_001164222 , NP_001164223 , NP_006298
UniProt:	P78539

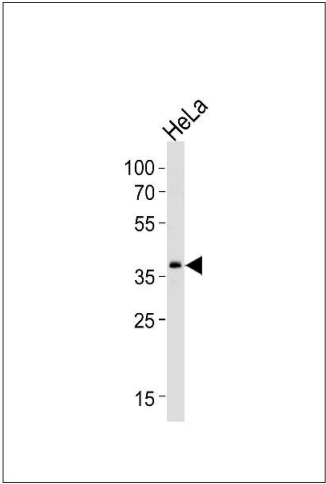
Application Details

Application Notes:	WB: 1:1000
Restrictions:	For Research Use only

Handling

Format:	Liquid
Buffer:	Purified polyclonal antibody supplied in PBS with 0.09 % (W/V) sodium azide.
Preservative:	Sodium azide
Precaution of Use:	This product contains Sodium azide: a POISONOUS AND HAZARDOUS SUBSTANCE which should be handled by trained staff only.
Storage:	4 °C,-20 °C
Storage Comment:	SRPX Antibody (Center) can be refrigerated at 2-8 °C for up to 6 months. For long term storage, keep at -20 °C.
Expiry Date:	6 months

Images



Western Blotting

Image 1. Western blot analysis of lysate from HeLa cell line, using SRPX Antibody (Center) (ABIN1538103 and ABIN2848504). (ABIN1538103 and ABIN2848504) was diluted at 1:1000 at each lane. A goat anti-rabbit IgG H&L(HRP) at 1:5000 dilution was used as the secondary antibody. Lysate at 35 µg per lane.