



Datasheet for ABIN1538106
anti-MRPS31 antibody (AA 219-247)



[Go to Product page](#)

1 Image

Overview

Quantity:	400 µL
Target:	MRPS31
Binding Specificity:	AA 219-247
Reactivity:	Human
Host:	Rabbit
Clonality:	Polyclonal
Conjugate:	This MRPS31 antibody is un-conjugated
Application:	Western Blotting (WB)

Product Details

Immunogen:	This MRPS31 antibody is generated from rabbits immunized with a KLH conjugated synthetic peptide between 219-247 amino acids from the Central region of human MRPS31.
Clone:	RB37345
Isotype:	Ig Fraction
Purification:	This antibody is purified through a protein A column, followed by peptide affinity purification.

Target Details

Target:	MRPS31
Alternative Name:	MRPS31 (MRPS31 Products)
Background:	Mammalian mitochondrial ribosomal proteins are encoded by nuclear genes and help in protein

Target Details

synthesis within the mitochondrion. Mitochondrial ribosomes (mitoribosomes) consist of a small 28S subunit and a large 39S subunit. They have an estimated 75 % protein to rRNA composition compared to prokaryotic ribosomes, where this ratio is reversed. Another difference between mammalian mitoribosomes and prokaryotic ribosomes is that the latter contain a 5S rRNA. Among different species, the proteins comprising the mitoribosome differ greatly in sequence, and sometimes in biochemical properties, which prevents easy recognition by sequence homology. The 28S subunit of the mammalian mitoribosome may play a crucial and characteristic role in translation initiation. This gene encodes a 28S subunit protein that has also been associated with type 1 diabetes, however, its relationship to the etiology of this disease remains to be clarified. Pseudogenes corresponding to this gene have been found on chromosomes 3 and 13. [provided by RefSeq].

Molecular Weight: 45318

Gene ID: 10240

NCBI Accession: [NP_005821](#)

UniProt: [Q92665](#)

Application Details

Application Notes: WB: 1:1000

Restrictions: For Research Use only

Handling

Format: Liquid

Buffer: Purified polyclonal antibody supplied in PBS with 0.09 % (W/V) sodium azide.

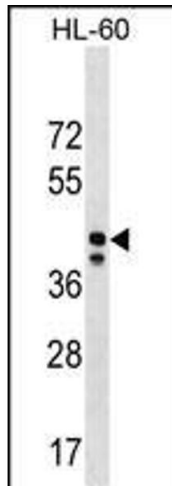
Preservative: Sodium azide

Precaution of Use: This product contains Sodium azide: a POISONOUS AND HAZARDOUS SUBSTANCE which should be handled by trained staff only.

Storage: 4 °C,-20 °C

Storage Comment: MRPS31 Antibody (Center) can be refrigerated at 2-8 °C for up to 6 months. For long term storage, keep at -20 °C.

Expiry Date: 6 months



Western Blotting

Image 1. MRPS31 Antibody (Center) (ABIN1538106 and ABIN2850176) western blot analysis in HL-60 cell line lysates (35 µg/lane). This demonstrates the MRPS31 antibody detected the MRPS31 protein (arrow).