

Datasheet for ABIN1538116
anti-AP4M1 antibody (AA 223-251)[Go to Product page](#)

1 Image

Overview

Quantity:	400 µL
Target:	AP4M1 (Ap4m1)
Binding Specificity:	AA 223-251
Reactivity:	Human
Host:	Rabbit
Clonality:	Polyclonal
Conjugate:	This AP4M1 antibody is un-conjugated
Application:	Western Blotting (WB)

Product Details

Immunogen:	This AP4M1 antibody is generated from rabbits immunized with a KLH conjugated synthetic peptide between 223-251 amino acids from the Central region of human AP4M1.
Clone:	RB37173
Isotype:	Ig Fraction
Predicted Reactivity:	B, M, Rat
Purification:	This antibody is purified through a protein A column, followed by peptide affinity purification.

Target Details

Target:	AP4M1 (Ap4m1)
Alternative Name:	AP4M1 (Ap4m1 Products)

Target Details

Background: This gene encodes a subunit of the heterotetrameric AP-4 complex. The encoded protein belongs to the adaptor complexes medium subunits family. This AP-4 complex is involved in the recognition and sorting of cargo proteins with tyrosine-based motifs from the trans-golgi network to the endosomal-lysosomal system.

Molecular Weight: 49977

Gene ID: 9179

NCBI Accession: [NP_004713](#)

UniProt: [O00189](#)

Application Details

Application Notes: WB: 1:1000

Restrictions: For Research Use only

Handling

Format: Liquid

Buffer: Purified polyclonal antibody supplied in PBS with 0.09 % (W/V) sodium azide.

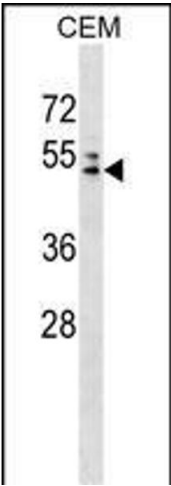
Preservative: Sodium azide

Precaution of Use: This product contains Sodium azide: a POISONOUS AND HAZARDOUS SUBSTANCE which should be handled by trained staff only.

Storage: 4 °C, -20 °C

Storage Comment: AP4M1 Antibody (Center) can be refrigerated at 2-8 °C for up to 6 months. For long term storage, keep at -20 °C.

Expiry Date: 6 months



Western Blotting

Image 1. M1 Antibody (Center) (ABIN1538116 and ABIN2849058) western blot analysis in CEM cell line lysates (35 µg/lane). This demonstrates the M1 antibody detected the M1 protein (arrow).