



Datasheet for ABIN1538120
anti-RBMS1 antibody (AA 224-252)



[Go to Product page](#)

1 Image

Overview

Quantity:	400 µL
Target:	RBMS1
Binding Specificity:	AA 224-252
Reactivity:	Human
Host:	Rabbit
Clonality:	Polyclonal
Conjugate:	This RBMS1 antibody is un-conjugated
Application:	Western Blotting (WB)

Product Details

Immunogen:	This RBMS1 antibody is generated from rabbits immunized with a KLH conjugated synthetic peptide between 224-252 amino acids from the Central region of human RBMS1.
Clone:	RB36791
Isotype:	Ig Fraction
Purification:	This antibody is purified through a protein A column, followed by peptide affinity purification.

Target Details

Target:	RBMS1
Alternative Name:	RBMS1 (RBMS1 Products)
Background:	This gene encodes a member of a small family of proteins which bind single stranded

Target Details

DNA/RNA. These proteins are characterized by the presence of two sets of ribonucleoprotein consensus sequence (RNP-CS) that contain conserved motifs, RNP1 and RNP2, originally described in RNA binding proteins, and required for DNA binding. These proteins have been implicated in such diverse functions as DNA replication, gene transcription, cell cycle progression and apoptosis. Several transcript variants, resulting from alternative splicing and encoding different isoforms, have been described. A pseudogene for this locus is found on chromosome 12.

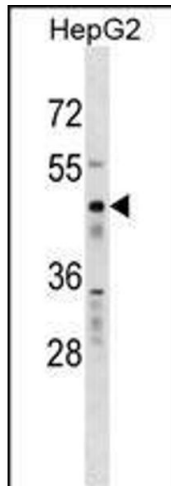
Molecular Weight:	44505
Gene ID:	5937
NCBI Accession:	NP_002888 , NP_058520
UniProt:	P29558

Application Details

Application Notes:	WB: 1:1000
Restrictions:	For Research Use only

Handling

Format:	Liquid
Buffer:	Purified polyclonal antibody supplied in PBS with 0.09 % (W/V) sodium azide.
Preservative:	Sodium azide
Precaution of Use:	This product contains Sodium azide: a POISONOUS AND HAZARDOUS SUBSTANCE which should be handled by trained staff only.
Storage:	4 °C,-20 °C
Storage Comment:	RBMS1 Antibody (Center) can be refrigerated at 2-8 °C for up to 6 months. For long term storage, keep at -20 °C.
Expiry Date:	6 months



Western Blotting

Image 1. RBMS1 Antibody (Center) (ABIN1538120 and ABIN2848846) western blot analysis in HepG2 cell line lysates (35 µg/lane). This demonstrates the RBMS1 antibody detected the RBMS1 protein (arrow).